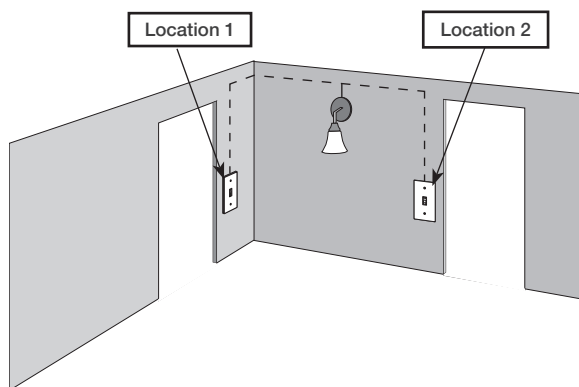


1 Identify existing wiring



Two switches control the lights (3-way installation)

Important note:

- If one switch controls the lights (single-pole installation) See quick-start guide that came with your dimmer
- If three or more switches control the lights (multi-location installation) See page 31 for details

2 What you need for a 3-way installation



In-wall dimmer
PD-6WCL

+



Claro® Wallplate
CW-1

+

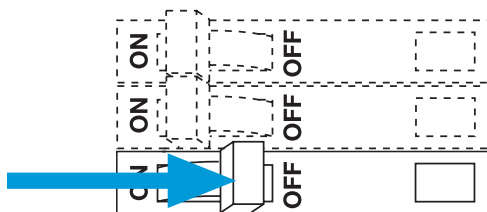


Pico® remote control
with wall-mounting kit
PJ2-WALL

3 Choose a location for your Caséta® Wireless dimmer

Choose which location you want the Caséta® Wireless dimmer installed in. This will be Location 1.

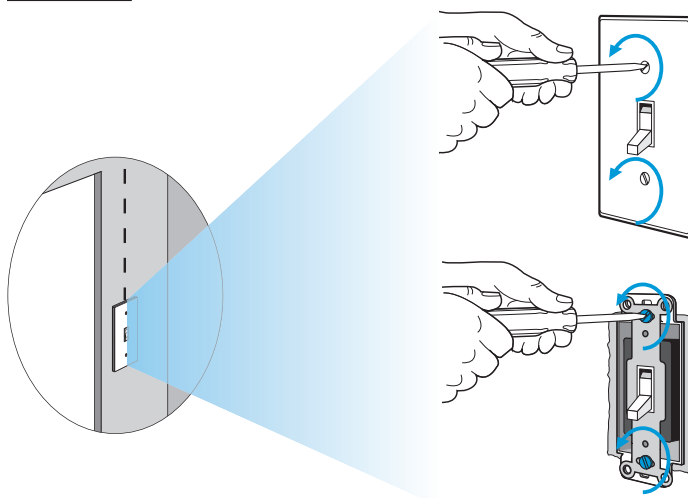
4 Turn power off at circuit breaker



WARNING! Shock Hazard. May result in serious injury or death. Turn off power at circuit breaker before installing the unit.

5 Remove existing switch from wall

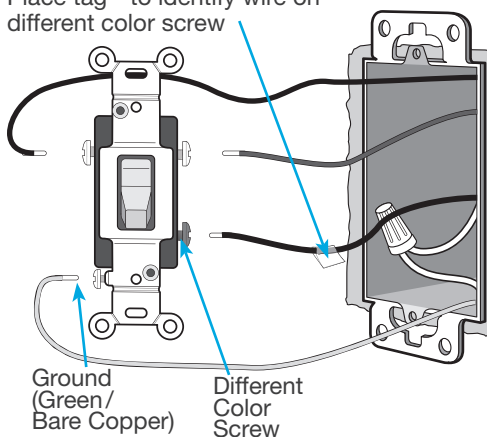
Location 1



6 Tag and disconnect wires from the existing switch

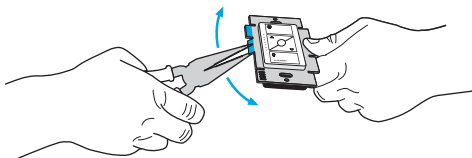
Location 1

Place tag - to identify wire on different color screw

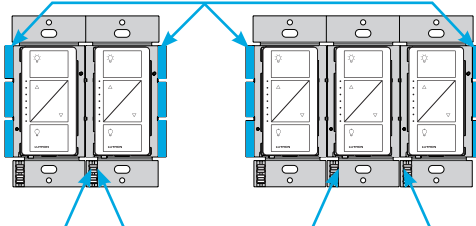


7 Remove side sections (if necessary)

When installing more than one Caséta® Wireless dimmer in the same wallbox, it is necessary to remove inner side sections prior to wiring. See image and chart below for more information.



Do not remove outside side sections on dimmers at the end of gang.



Each dimmer has inside side sections removed.

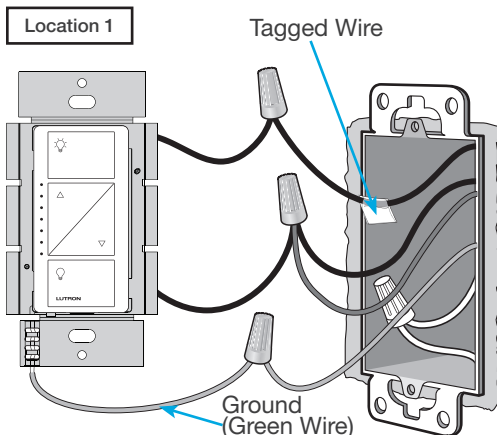
Dimmer in the middle has all side sections removed.

Important note:

Removing side sections reduces the dimmer's maximum wattage rating. See the chart below for maximum wattage information.

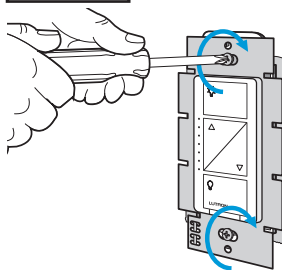
Total Dimmable LED Wattage	Incandescent/Halogen Total Wattage		
	A	B	C
0 W	+ 600 W	500 W	400 W
1 W – 25 W	+ 500 W	400 W	300 W
26 W – 50 W	+ 400 W	300 W	200 W
51 W – 75 W	+ 300 W	200 W	100 W
76 W – 100 W	+ 200 W	100 W	50 W
101 W – 125 W	+ 100 W	50 W	0 W
126 W – 150 W	+ 0 W	0 W	0 W

8 Connect the Caséta® Wireless dimmer



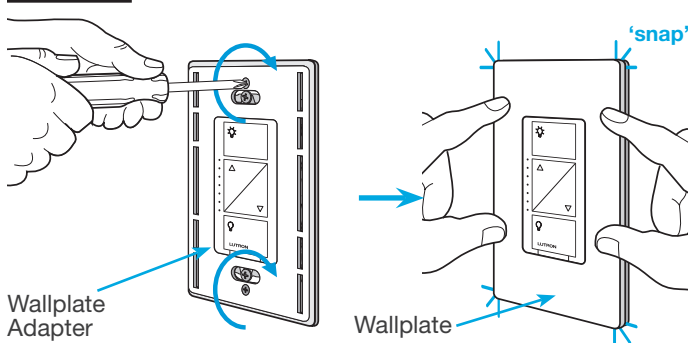
9 Mount the Caséta® Wireless dimmer

Location 1



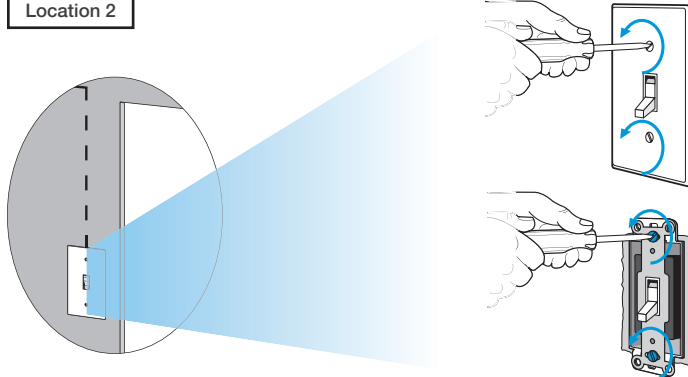
10 Attach the wallplate

Location 1



11 Remove existing switch from wall at Location 2

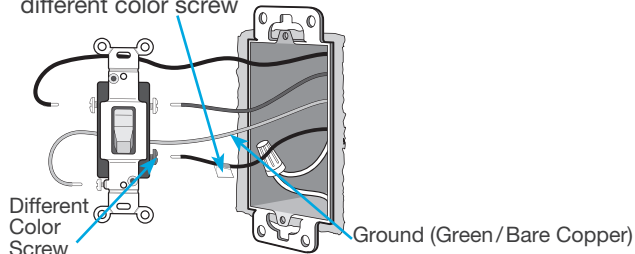
Location 2



12 Tag and disconnect wires from the switch

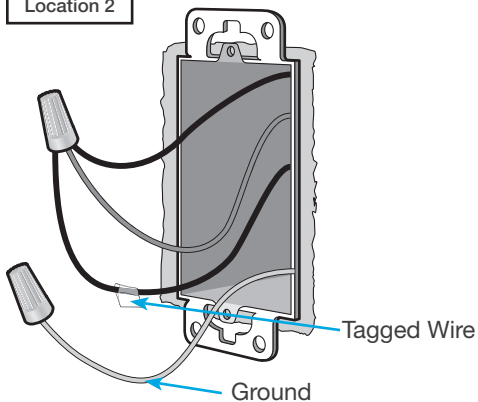
Location 2

Place tag - to identify wire on different color screw



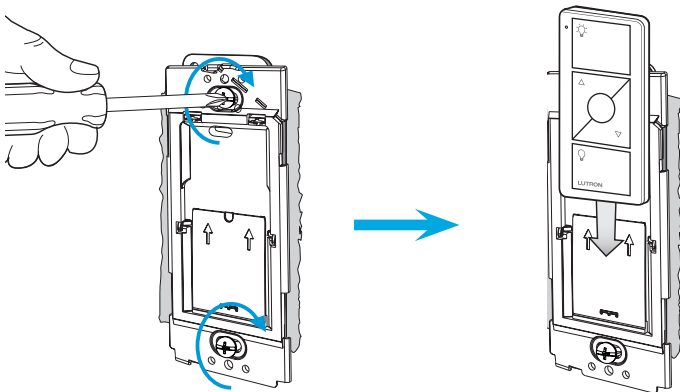
13 Connect the wires

Location 2



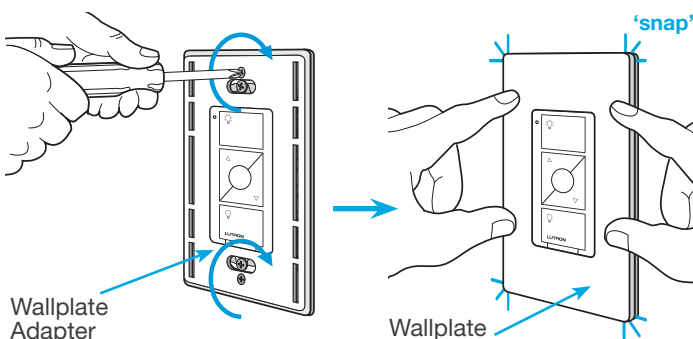
14 Attach the wallplate bracket and Pico® remote control

Location 2

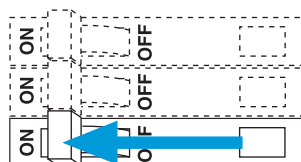


15 Attach the wallplate

Location 2



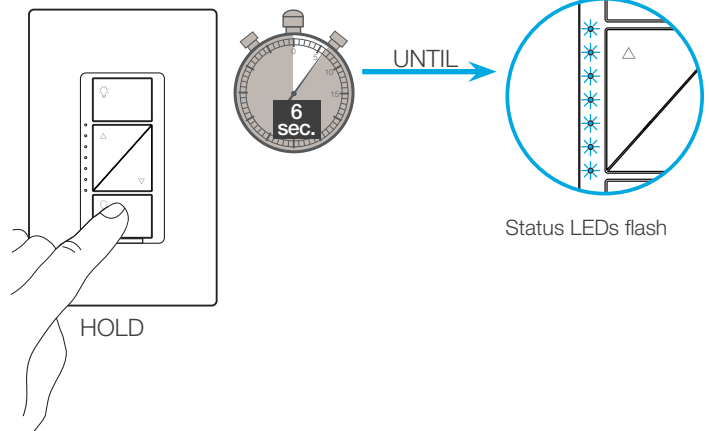
16 Turn power on at circuit breaker



Pairing the dimmer and Pico® remote control

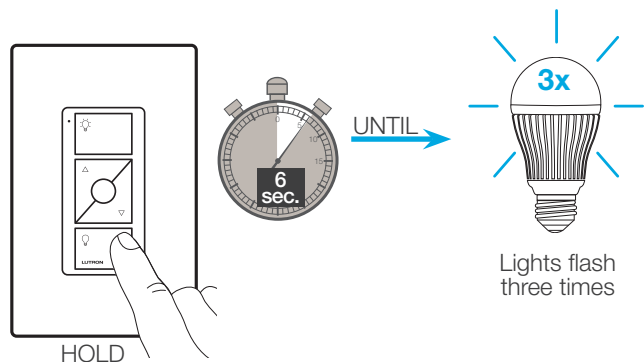
17 Press and hold "Off" button on dimmer

Location 1



18 Press and hold "Off" button on remote control

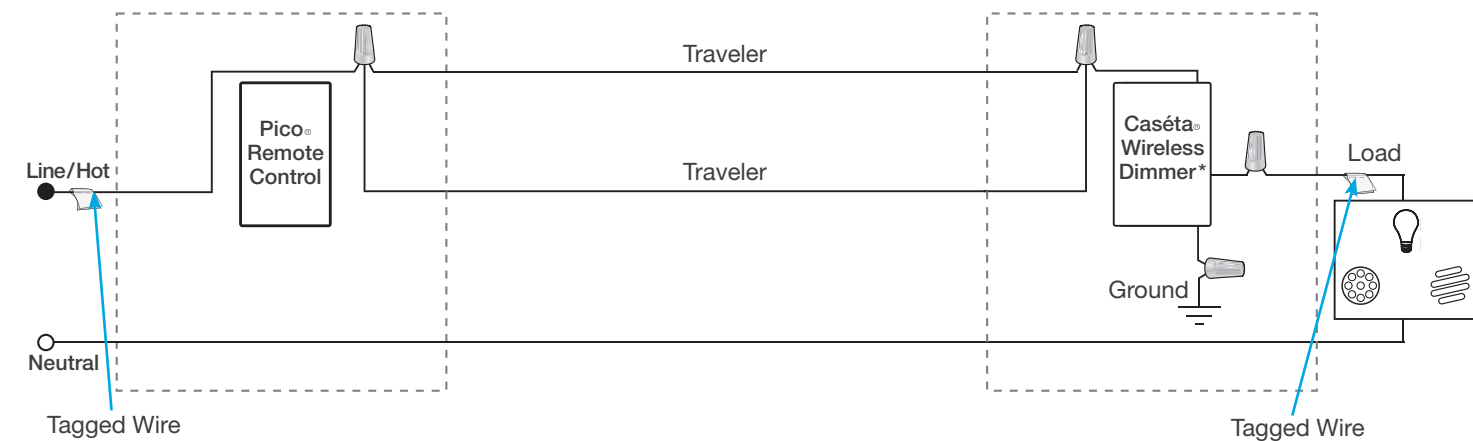
Location 2



19 Pair additional remote controls

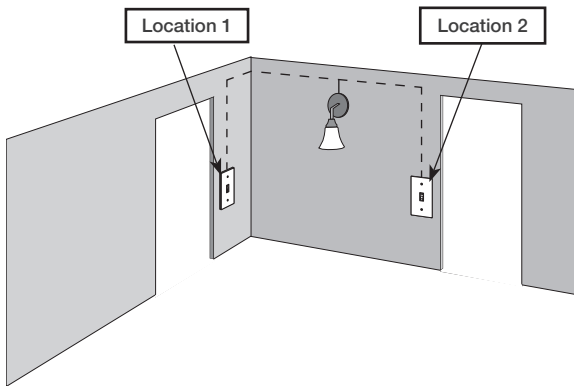
Repeat steps 17 and 18 to pair additional remote controls.

Schematic Diagram



* Dimmer may be installed in either location.

1 Identify existing wiring



Two switches control the lights (3-way installation)

Important note:

- If one switch controls the lights (single-pole installation) See quick-start guide that came with your switch
- If three or more switches control the lights (multi-location installation) See page 41 for details

2 What you need for a 3-way installation



In-wall switch
PD-5WS-DV

+



Pico® remote control
PJ2-2B

+



Wallplate Bracket
PICO-WBX-ADAPT

+

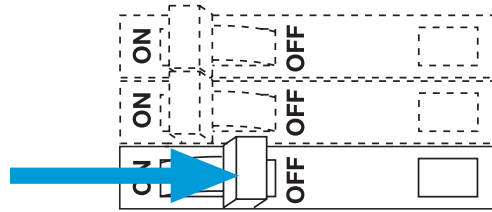


Two Claro® Wallplates
CW-1

3 Choose a location for your Caséta® Wireless switch

Choose which location you want the Caséta® Wireless switch installed in. This will be Location 1.

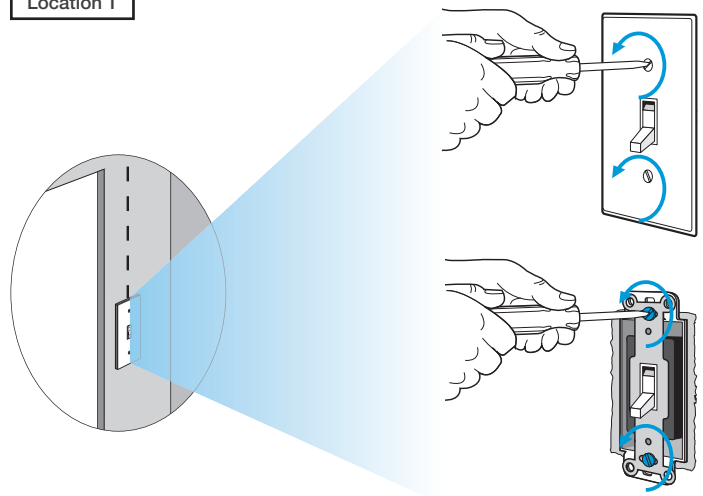
4 Turn power off at circuit breaker



WARNING! Shock Hazard. May result in serious injury or death. Turn off power at circuit breaker before installing the unit.

5 Remove existing switch from wall

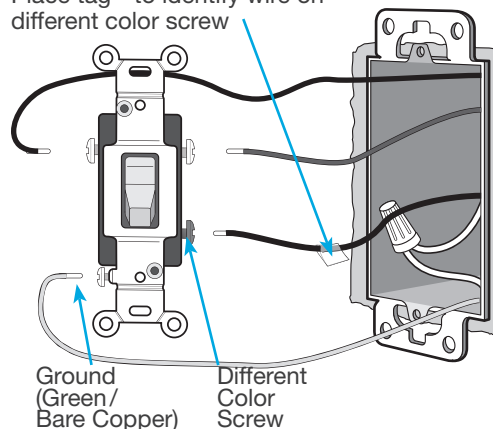
Location 1



6 Tag and disconnect wires from the existing switch

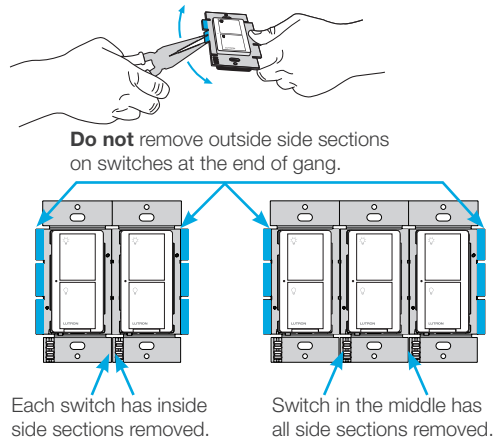
Location 1

Place tag - to identify wire on different color screw



7 Remove side sections (if necessary)

When installing more than one Caséta® Wireless switch in the same wallbox, it is necessary to remove inner side sections prior to wiring. See image and chart below for more information.



Important note:

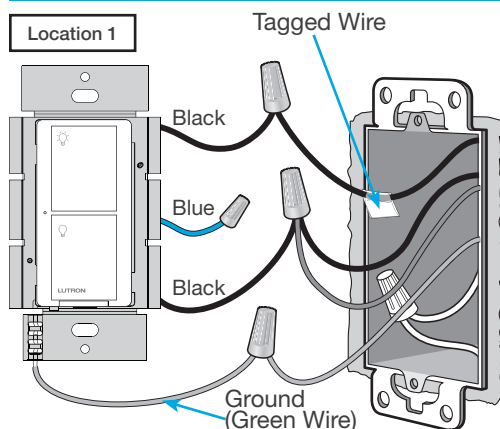
Removing side sections reduces the switch's maximum wattage rating. See the chart below for maximum wattage information.

	A	B	C
PD-5WS-DV (120 V~)			
LED	5 A	4 A	3 A
Halogen/incandescent	600 W	450 W	350 W
Electronic Low-Voltage	600 W	450 W	350 W
Magnetic Low-Voltage ¹	600 VA/475 W	450 VA/350 W	350 VA/275 W
Fluorescent ²	5 A	4 A	3 A
General Purpose Fan	3 A	3 A	3 A
PD-5WS-DV (277 V~)			
LED	5 A	4 A	3 A
Halogen/incandescent	1350 W	1100 W	800 W
Electronic Low-Voltage	1350 W	1100 W	800 W
Magnetic Low-Voltage ¹	1350 VA/1075 W	1100 VA/875 W	800 VA/625 W
Fluorescent ²	5 A	4 A	3 A

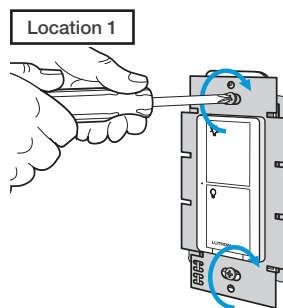
¹ The maximum lamp wattage is determined by the efficiency of the transformer, with 70% – 85% as typical. For actual transformer efficiency, contact either the fixture or transformer manufacturer. The total VA rating of the transformer(s) shall not exceed the VA rating of the in-wall switch.

² The in-wall switch is UL® Listed for use with all magnetic and electronic fluorescent ballasts.

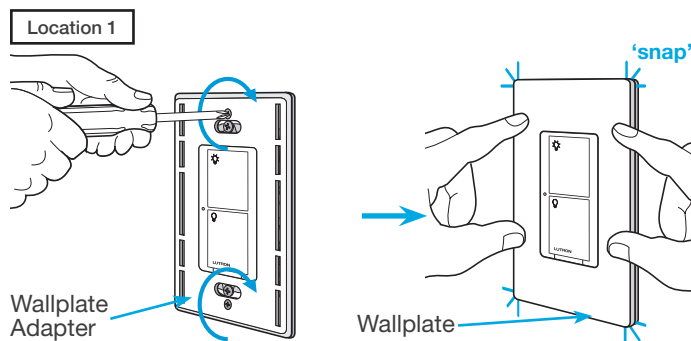
8 Connect the new Caséta® Wireless switch



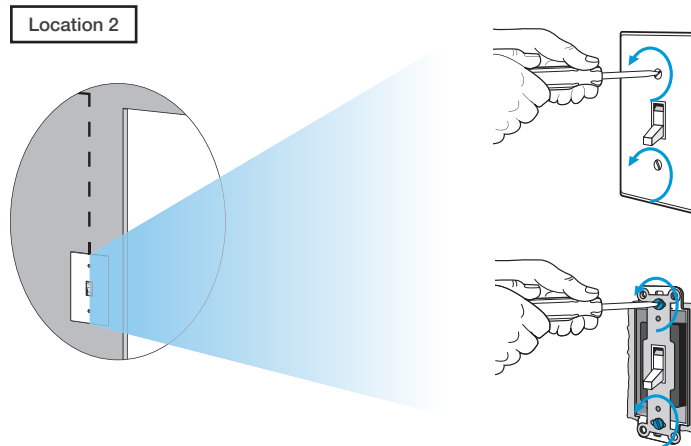
9 Mount the Caséta® Wireless switch



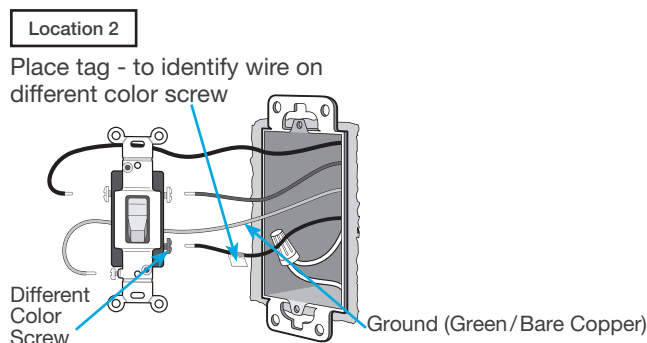
10 Attach the wallplate



11 Remove existing switch from wall at Location 2

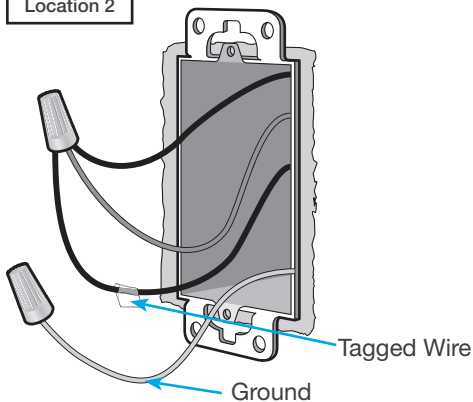


12 Tag and disconnect wires from the existing switch



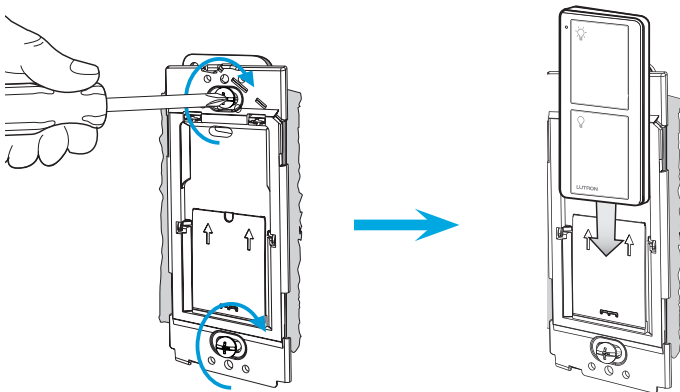
13 Connect the wires

Location 2



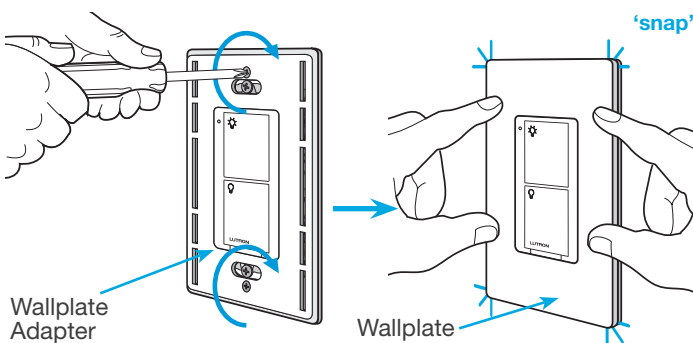
14 Attach the wallplate bracket and Pico® remote control

Location 2

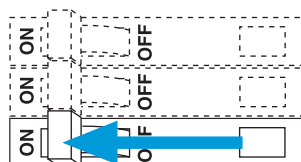


15 Attach the wallplate

Location 2



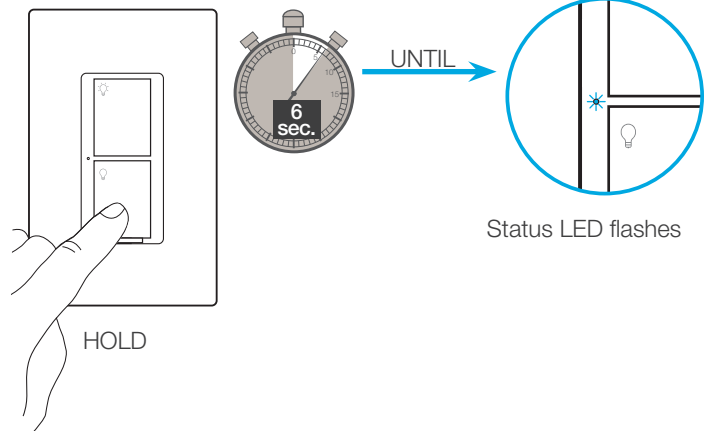
16 Turn power on at circuit breaker



Pairing the switch and Pico® remote control

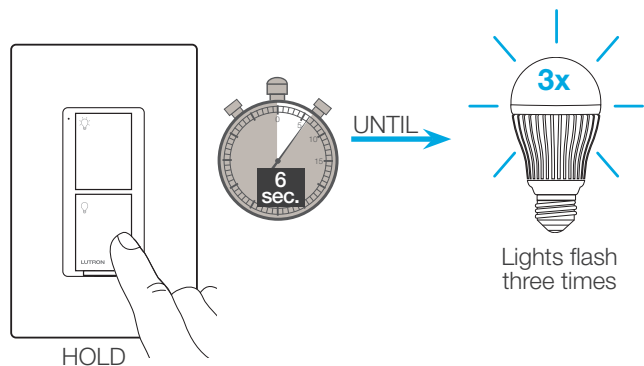
17 Press and hold "Off" button on switch

Location 1



18 Press and hold "Off" button on remote control

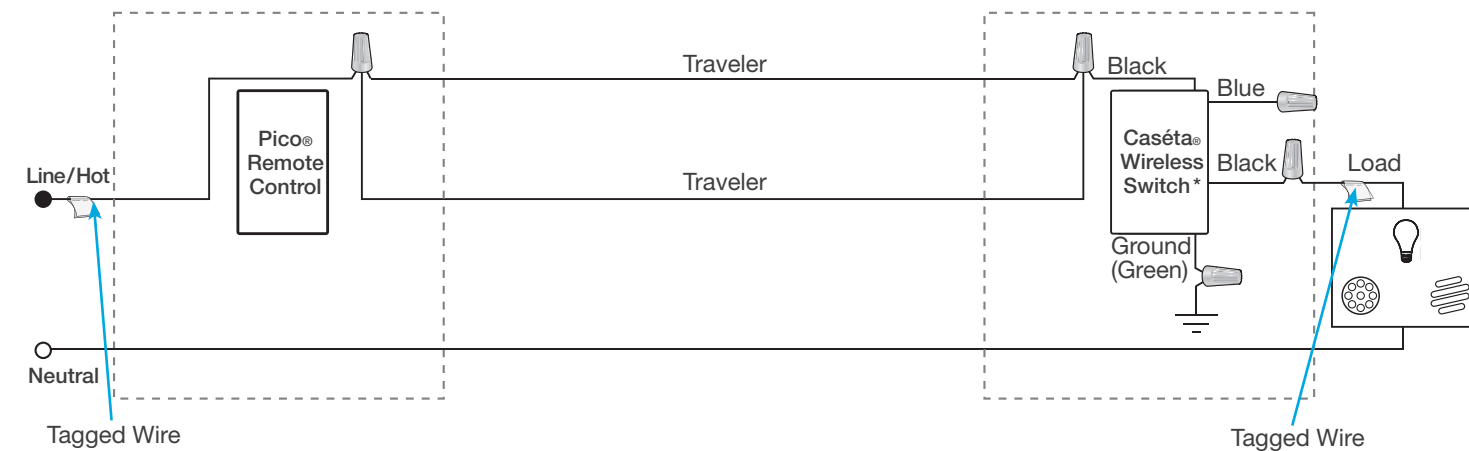
Location 2



19 Pair additional remote controls

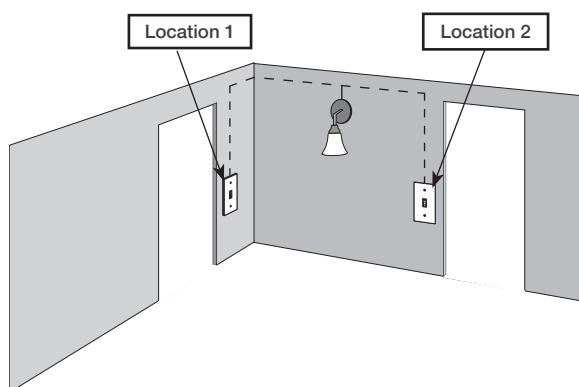
Repeat steps 17 and 18 to pair additional remote controls.

Schematic Diagram



* Switch may be installed in either location.

1 Identify existing wiring

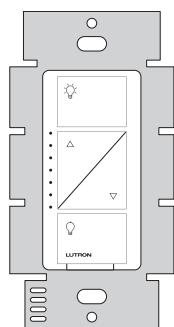


Two switches control the lights (3-way installation)

Important note:

- If one switch controls the lights (single-pole installation) See quick-start guide that came with your dimmer
- If three or more switches control the lights (multi-location installation) See page 36 for details

2 What you need for a 3-way installation



In-wall PRO dimmer
PD-10NXD

+



Claro® Wallplate
CW-1

+

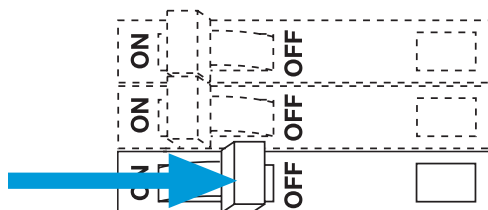


Pico® remote control
with wall-mounting kit
PJ2-WALL

3 Choose a location for your Caséta® Wireless dimmer

Choose which location you want the Caséta® Wireless dimmer installed in. This will be Location 1.

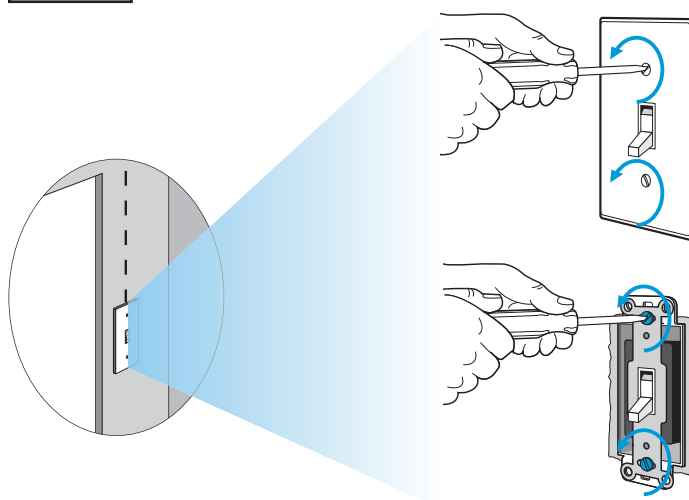
4 Turn power off at circuit breaker



WARNING! Shock Hazard. May result in serious injury or death. Turn off power at circuit breaker before installing the unit.

5 Remove existing switch from wall

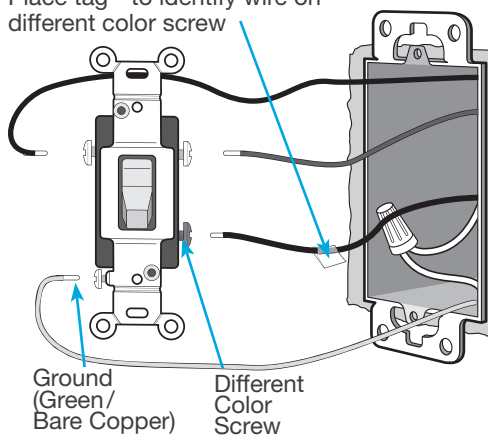
Location 1



6 Tag and disconnect wires from the existing switch

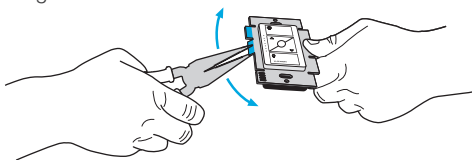
Location 1

Place tag - to identify wire on different color screw

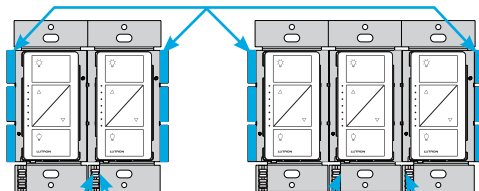


7 Remove side sections (if necessary)

When installing more than one Caséta® Wireless dimmer in the same wallbox, it is necessary to remove inner side sections prior to wiring. See image and chart below for more information.



Do not remove outside side sections on dimmers at the end of gang.



Each dimmer has inside side sections removed.

Dimmer in the middle has all side sections removed.

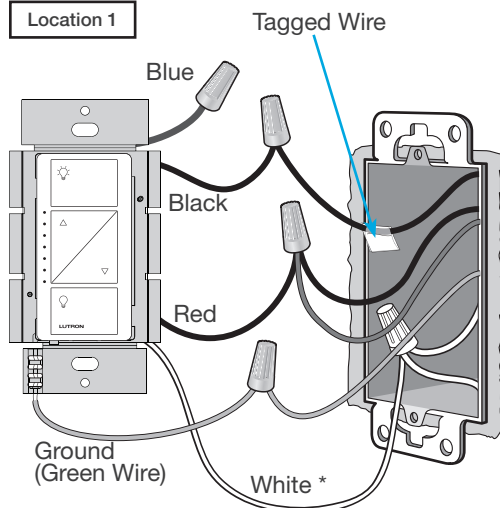
Important note:

Removing side sections reduces the dimmer's maximum wattage rating. See the chart below for maximum wattage information.

Total Dimmable LED Wattage	Incandescent/Halogen Total Wattage		
	A	B	C
0 W	+ 1000 W	800 W	600 W
1 W – 25 W	+ 900 W	750 W	550 W
26 W – 50 W	+ 800 W	700 W	500 W
51 W – 75 W	+ 700 W	600 W	450 W
76 W – 100 W	+ 600 W	500 W	400 W
101 W – 125 W	+ 500 W	400 W	300 W
126 W – 150 W	+ 400 W	300 W	200 W
151 W – 175 W	+ 300 W	200 W	100 W
176 W – 200 W	+ 200 W	100 W	50 W
201 W – 225 W	+ 100 W	50 W	0 W
226 W – 250 W	+ 0 W	0 W	0 W

8 Connect the Caséta® Wireless dimmer

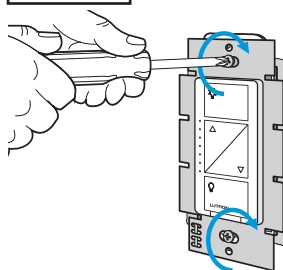
Location 1



* If available, connect the neutral wire from the wallbox to the white wire on the dimmer. If neutral is not available, cap the white wire with a wire connector. *Neutral required for: MLV loads, LED drivers, PHPM-PA, PHPM-3F, GRX-TVI.*

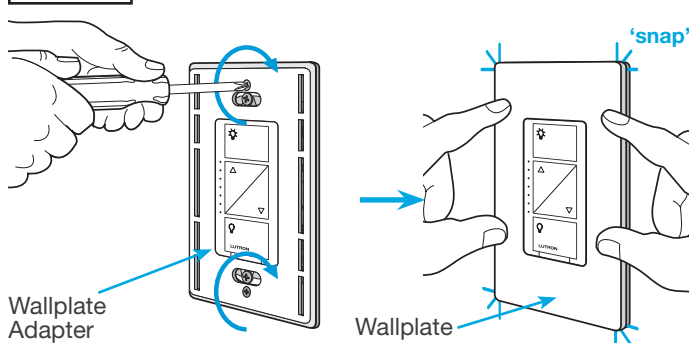
9 Mount the Caséta® Wireless dimmer

Location 1



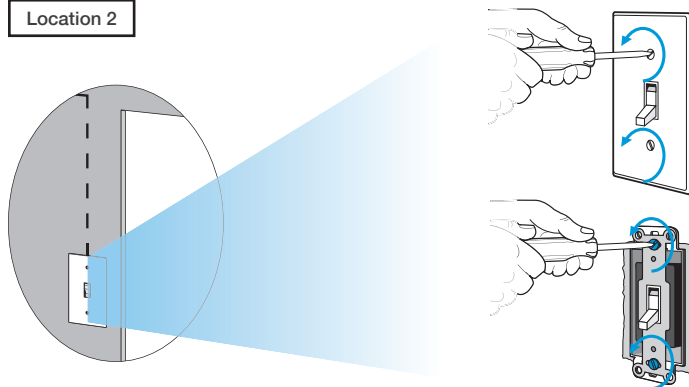
10 Attach the wallplate

Location 1



11 Remove existing switch from wall at Location 2

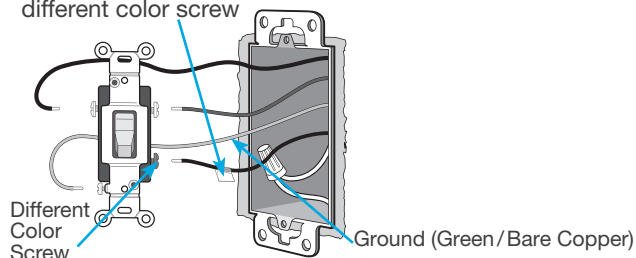
Location 2



12 Tag and disconnect wires from the switch

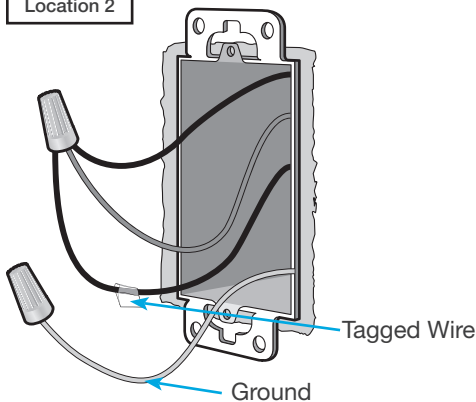
Location 2

Place tag - to identify wire on different color screw



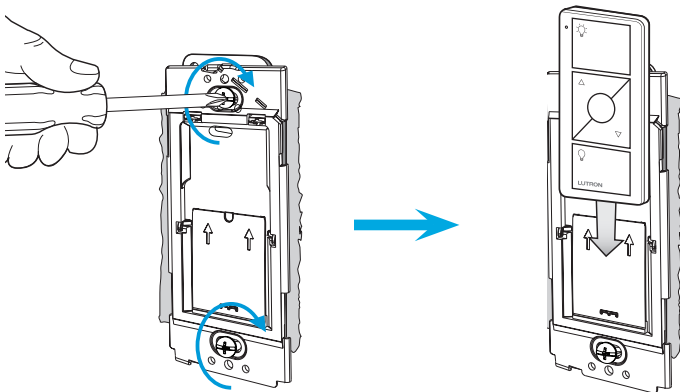
13 Connect the wires

Location 2



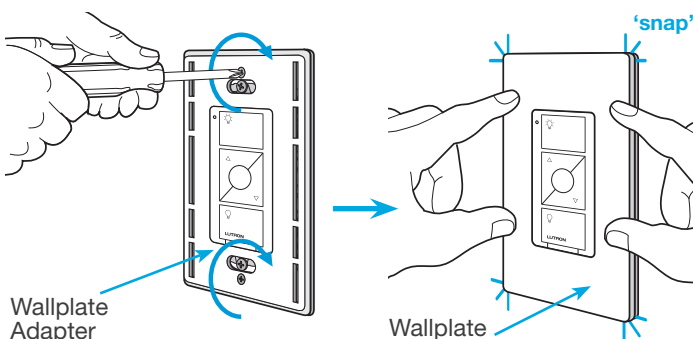
14 Attach the wallplate bracket and Pico® remote control

Location 2

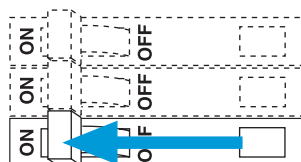


15 Attach the wallplate

Location 2



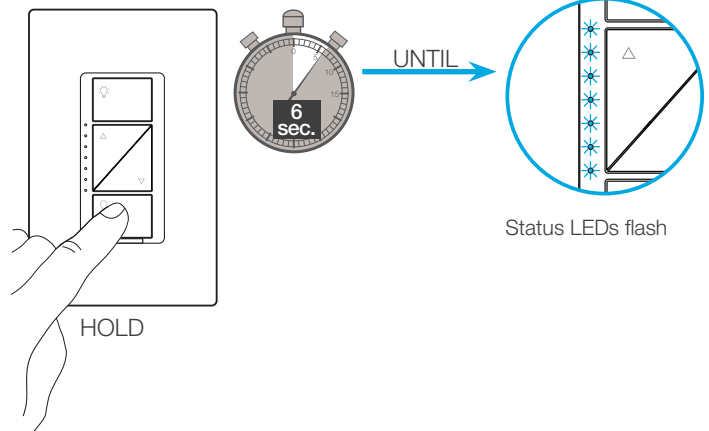
16 Turn power on at circuit breaker



Pairing the dimmer and Pico® remote control

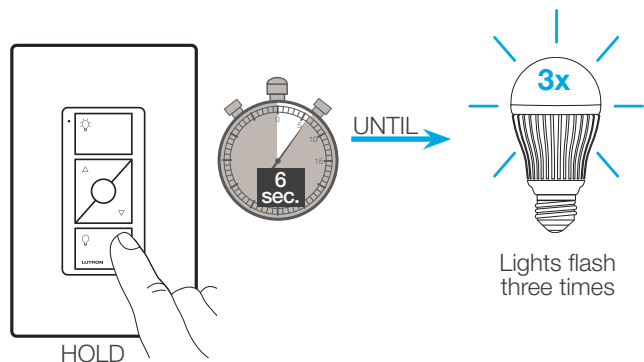
17 Press and hold "Off" button on dimmer

Location 1



18 Press and hold "Off" button on remote control

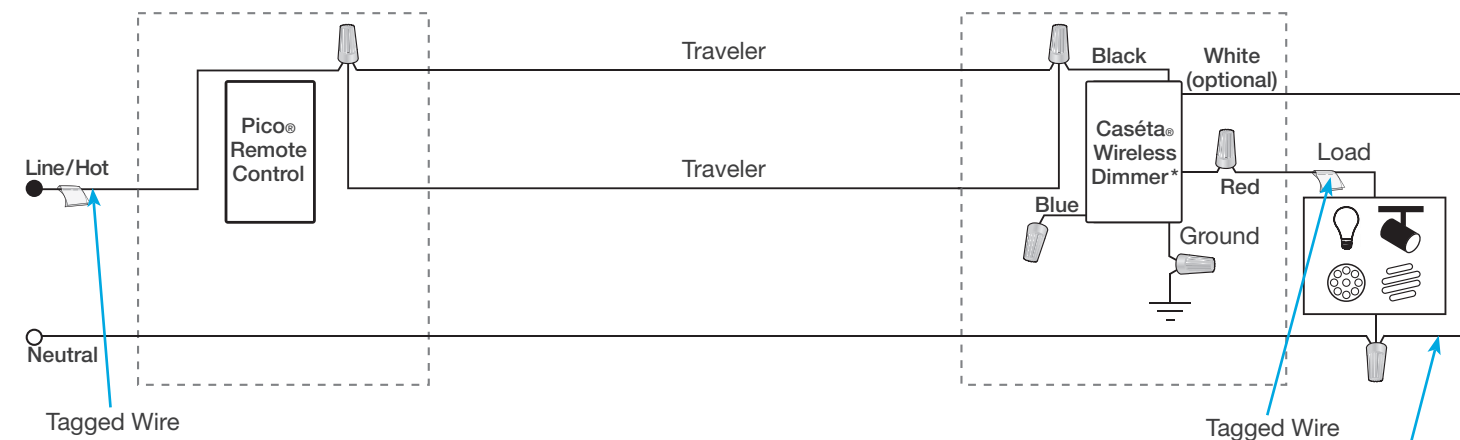
Location 2



19 Pair additional remote controls

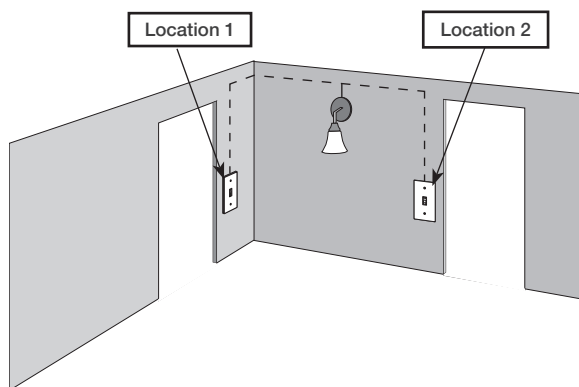
Repeat steps 17 and 18 to pair additional remote controls.

Schematic Diagram



If available, connect the neutral wire from the wallbox to the white wire on the dimmer. If neutral is not available, cap the white wire with a wire connector.
Neutral required for: MLV loads, LED drivers, PHPM-PA, PHPM-3F, GRX-TVI.

1 Identify existing wiring



Two switches control the lights (3-way installation)

Important note:

- If one switch controls the lights (single-pole installation) See quick-start guide that came with your switch
- If three or more switches control the lights (multi-location installation) See page 46 for details

2 What you need for a 3-way installation



In-wall switch
PD-6ANS

+



Pico® remote control
PJ2-2B

+



Wallplate Bracket
PICO-WBX-ADAPT

+

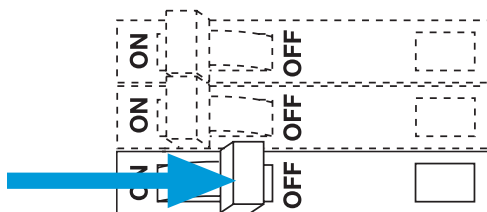


Two Claro® Wallplates
CW-1

3 Choose a location for your Caséta® Wireless switch

Choose which location you want the Caséta® Wireless switch installed in. This will be Location 1.

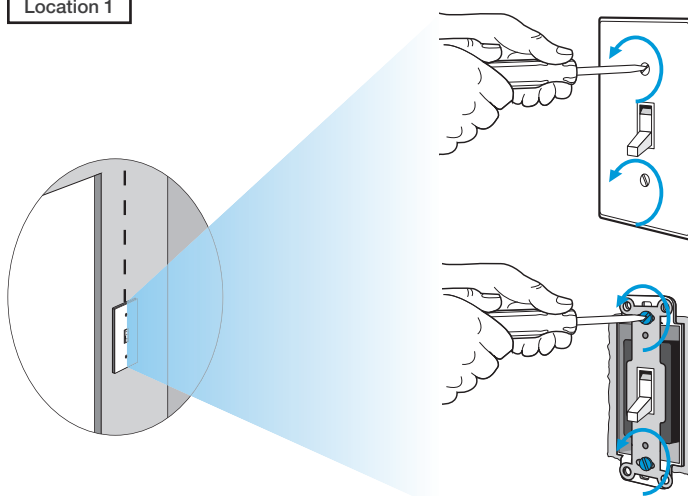
4 Turn power off at circuit breaker



WARNING! Shock Hazard. May result in serious injury or death. Turn off power at circuit breaker before installing the unit.

5 Remove existing switch from wall

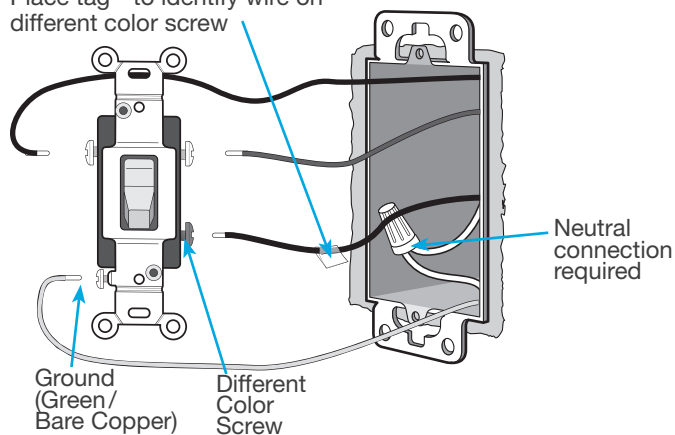
Location 1



6 Tag and disconnect wires from the existing switch

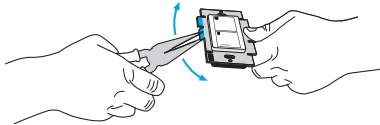
Location 1

Place tag - to identify wire on different color screw

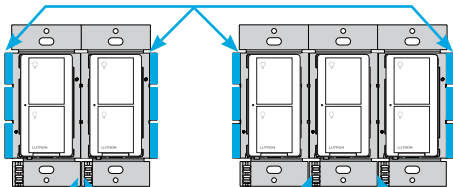


7 Remove side sections (if necessary)

When installing more than one Caséta® Wireless switch in the same wallbox, it is necessary to remove inner side sections prior to wiring. See image and chart below for more information.



Do not remove outside side sections on switches at the end of gang.



Each switch has inside side sections removed.

Switch in the middle has all side sections removed.

Important note:

Removing side sections reduces the switch's maximum wattage rating. See the chart below for maximum wattage information.

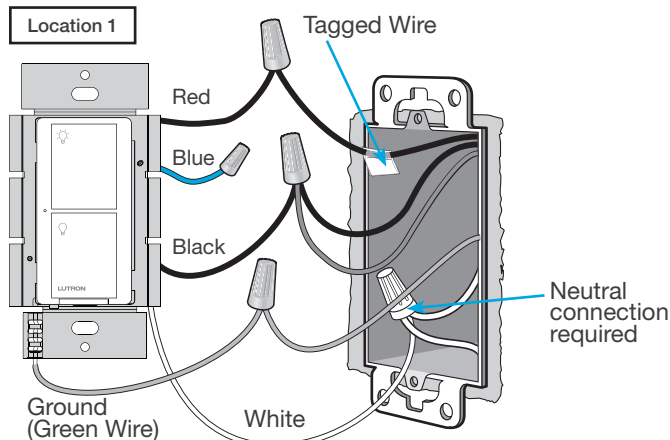
	A	B	C
PD-6ANS (120 V~)¹			
LED	6 A	6 A	5 A
Halogen/incandescent	720 W	720 W	600 W
Electronic Low-Voltage	720 VA	720 VA	600 VA
Magnetic Low-Voltage ²	720 VA	720 VA	600 VA
Fluorescent ³	6 A	6 A	5 A
General Purpose Fan	3.6 A	3.6 A	3.6 A

¹ Neutral required.

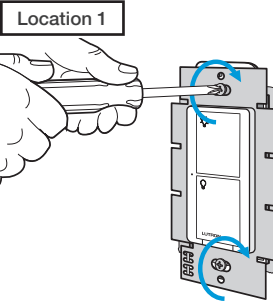
² The maximum lamp wattage is determined by the efficiency of the transformer, with 70% – 85% as typical. For actual transformer efficiency, contact either the fixture or transformer manufacturer. The total VA rating of the transformer(s) shall not exceed the VA rating of the in-wall switch.

³ The in-wall switch is UL® Listed for use with all magnetic and electronic fluorescent ballasts.

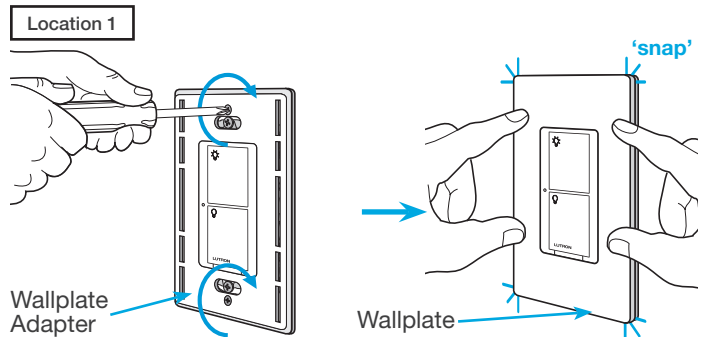
8 Connect the new Caséta® Wireless neutral switch



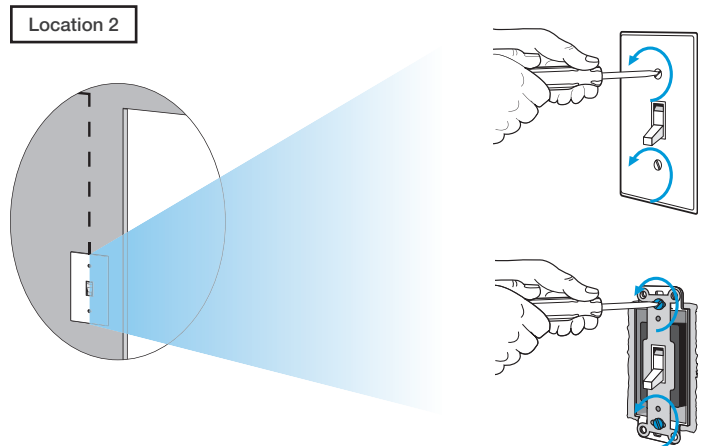
9 Mount the Caséta® Wireless neutral switch



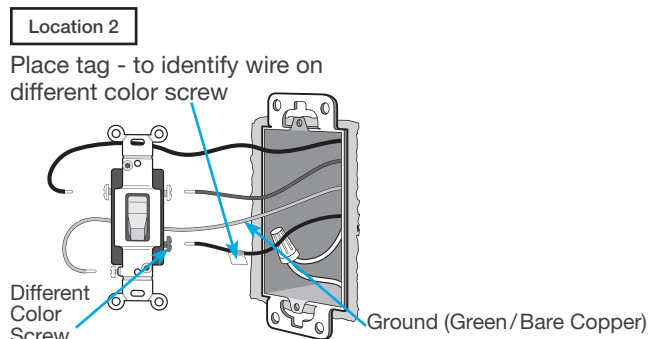
10 Attach the wallplate



11 Remove existing switch from wall at Location 2

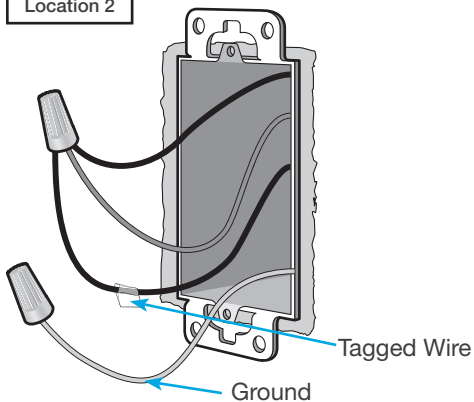


12 Tag and disconnect wires from the existing switch



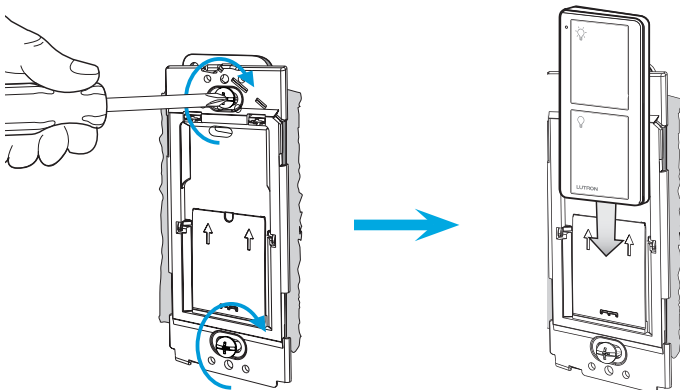
13 Connect the wires

Location 2



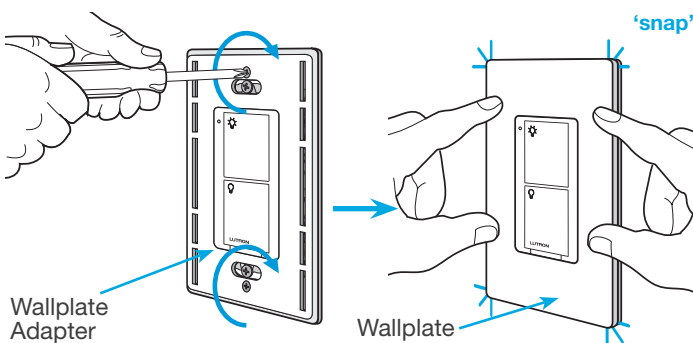
14 Attach the wallplate bracket and Pico® remote control

Location 2

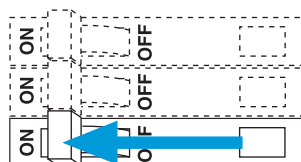


15 Attach the wallplate

Location 2



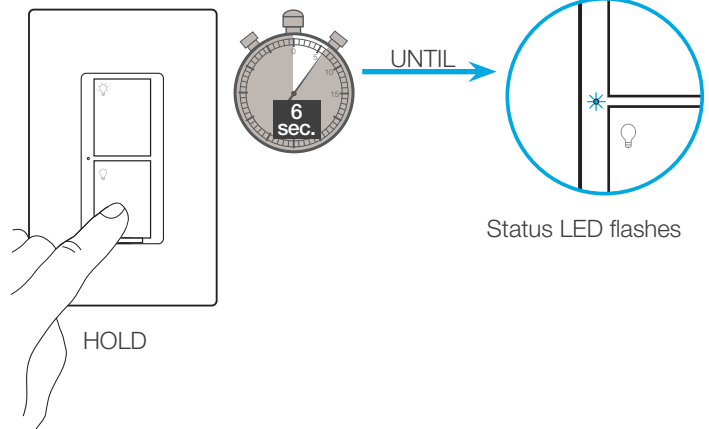
16 Turn power on at circuit breaker



Pairing the switch and Pico® remote control

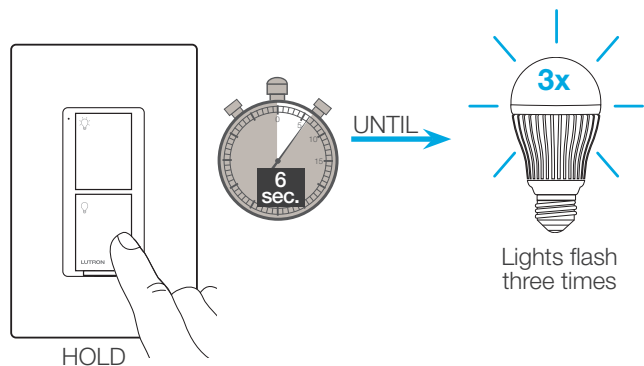
17 Press and hold "Off" button on switch

Location 1



18 Press and hold "Off" button on remote control

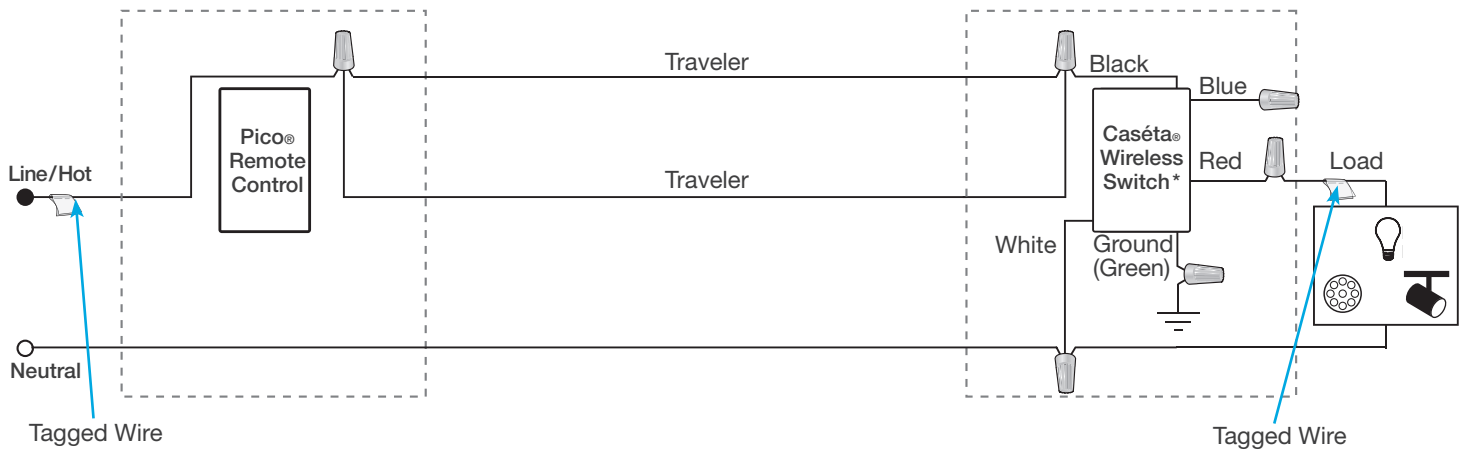
Location 2



19 Pair additional remote controls

Repeat steps 17 and 18 to pair additional remote controls.

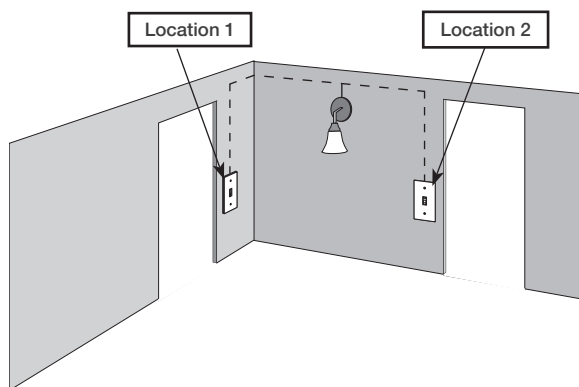
Schematic Diagram



* Switch may be installed in either location.

Note: The red wire must be connected to the load and the black wire must be connected to Line/Hot. The product will not work if the wires are reversed.

1 Identify existing wiring

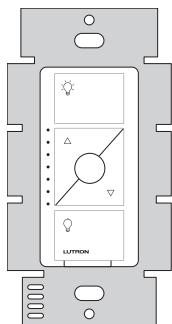


Two switches control the lights (3-way installation)

Important note:

- If one switch controls the lights (single-pole installation) See quick-start guide that came with your dimmer
- If three or more switches control the lights (multi-location installation) See page 51 for details

2 What you need for a 3-way installation



ELV+ dimmer
PD-5NE

+



Claro® Wallplate
CW-1

+

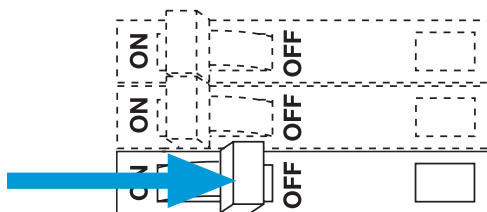


Pico® remote control
with wall-mounting kit
PJ2-WALL

3 Choose a location for your Caséta® Wireless dimmer

Choose which location you want the Caséta® Wireless dimmer installed in. This will be Location 1.

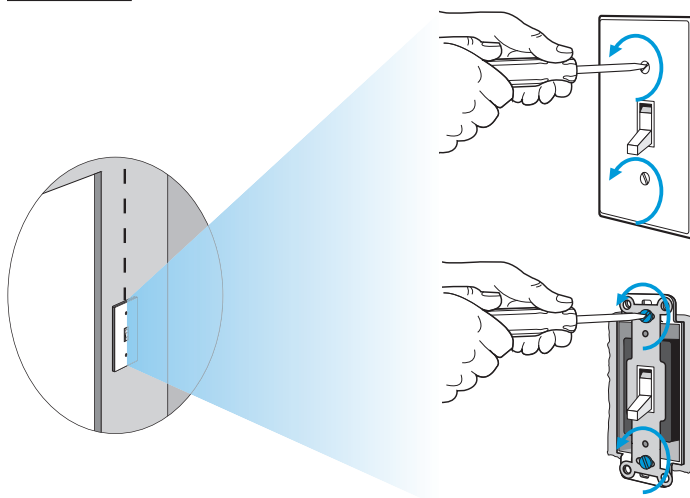
4 Turn power off at circuit breaker



WARNING! Shock Hazard. May result in serious injury or death. Turn off power at circuit breaker before installing the unit.

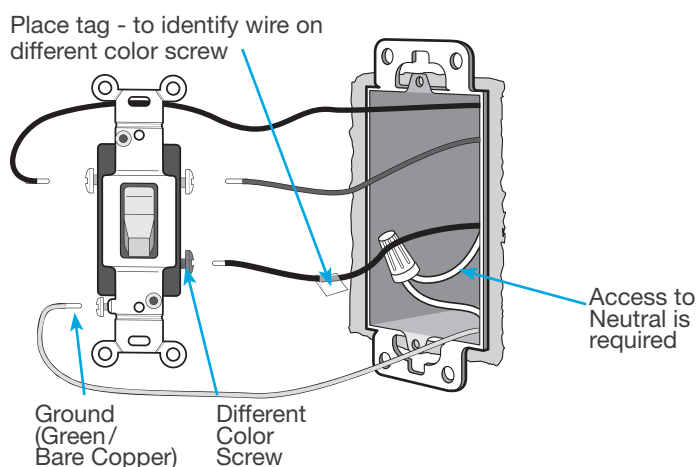
5 Remove existing switch from wall

Location 1



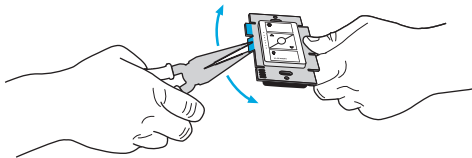
6 Tag and disconnect wires from the existing switch

Location 1

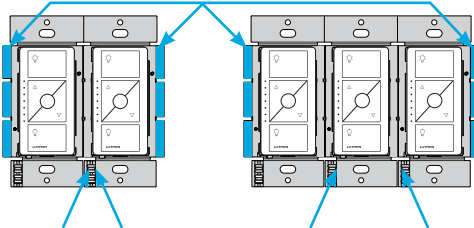


7 Remove side sections (if necessary)

When installing more than one Caséta® Wireless dimmer in the same wallbox, it is necessary to remove inner side sections prior to wiring. See image and chart below for more information.



Do not remove outside side sections on dimmers at the end of gang.



Each dimmer has inside side sections removed.

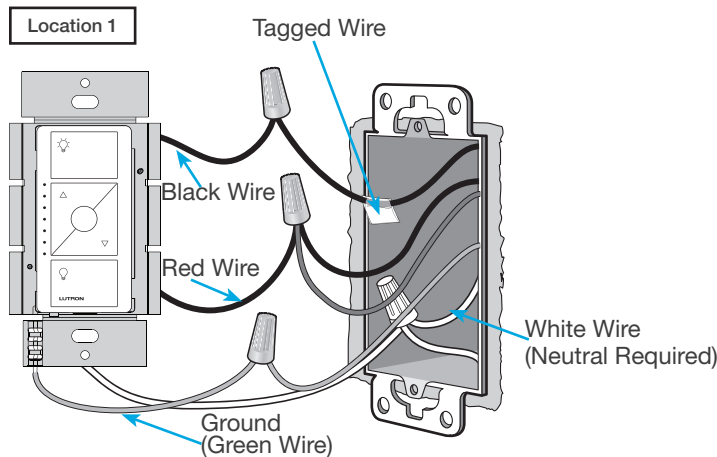
Dimmer in the middle has all side sections removed.

Important note:

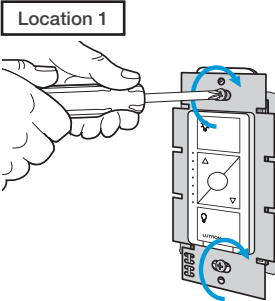
Removing side sections reduces the dimmer's maximum wattage rating. See the chart below for maximum wattage information.

PD-5NE (120 V~) ¹	Incandescent/Halogen Total Wattage		
	A	B	C
LED	250 W	250 W	250 W
Halogen / Incandescent	500 W	400 W	300 W
Electronics Low-Voltage	500 W	400 W	300 W
Magnetic Low Voltage	400 VA	400 VA	400 VA

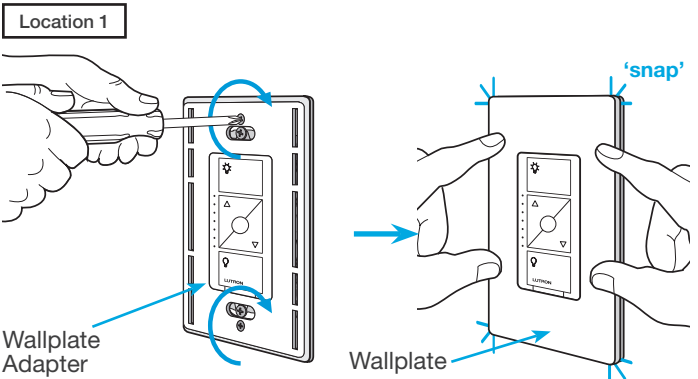
8 Connect the Caséta® Wireless dimmer



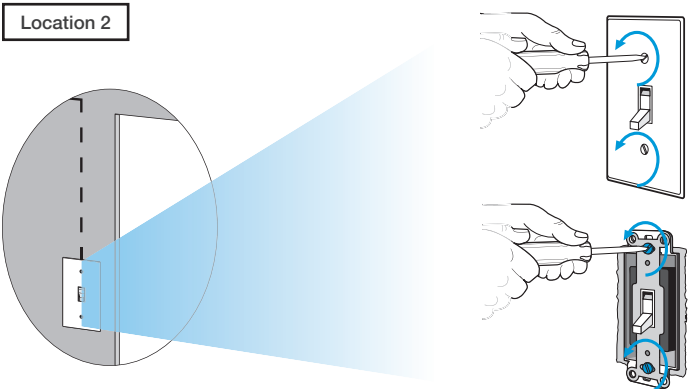
9 Mount the Caséta® Wireless dimmer



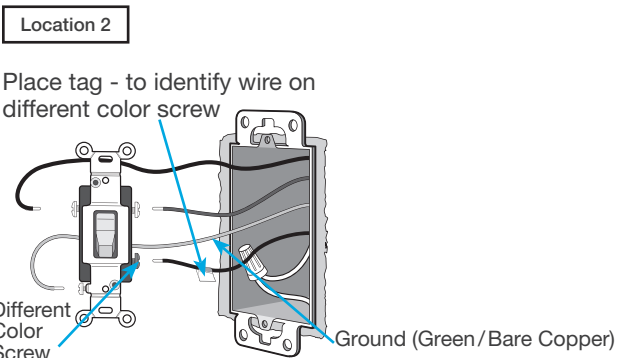
10 Attach the wallplate



11 Remove existing switch from wall at Location 2

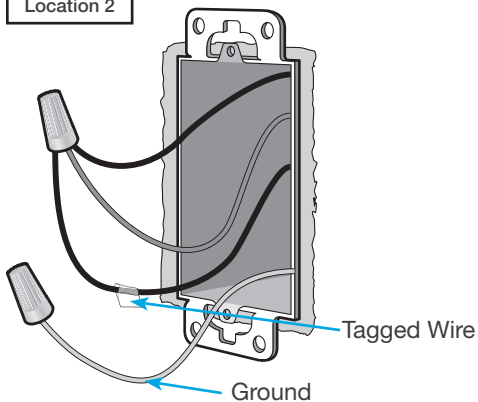


12 Tag and disconnect wires from the switch



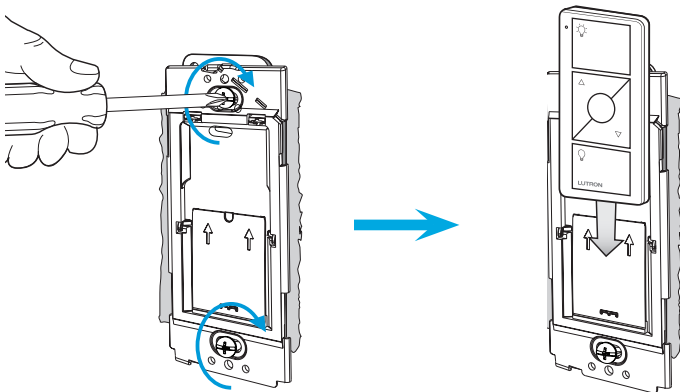
13 Connect the wires

Location 2



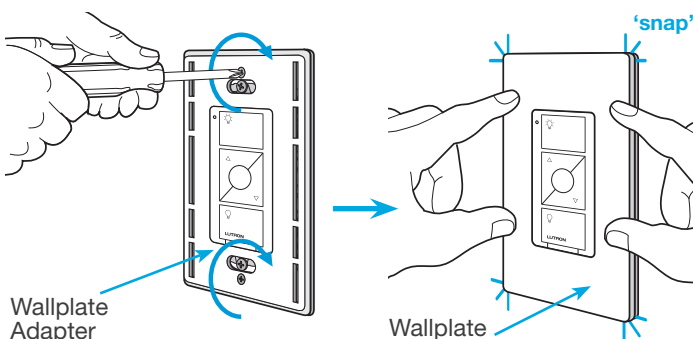
14 Attach the wallplate bracket and Pico® remote control

Location 2

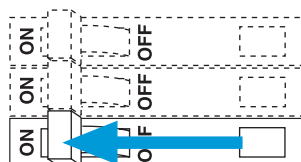


15 Attach the wallplate

Location 2



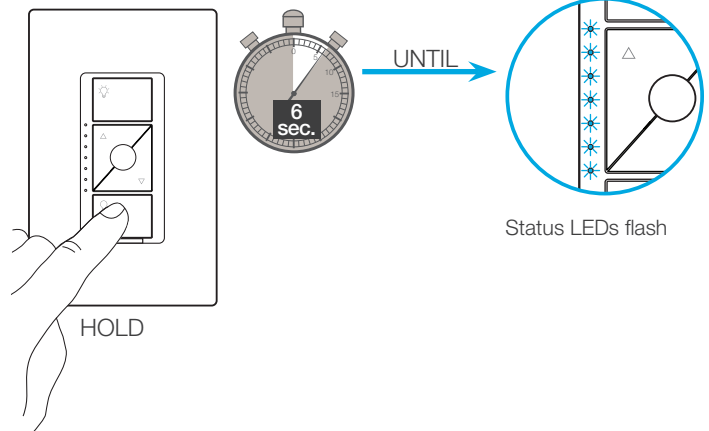
16 Turn power on at circuit breaker



Pairing the dimmer and Pico® remote control

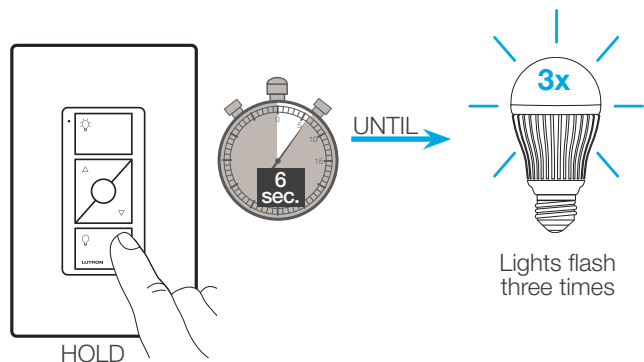
17 Press and hold "Off" button on dimmer

Location 1



18 Press and hold "Off" button on remote control

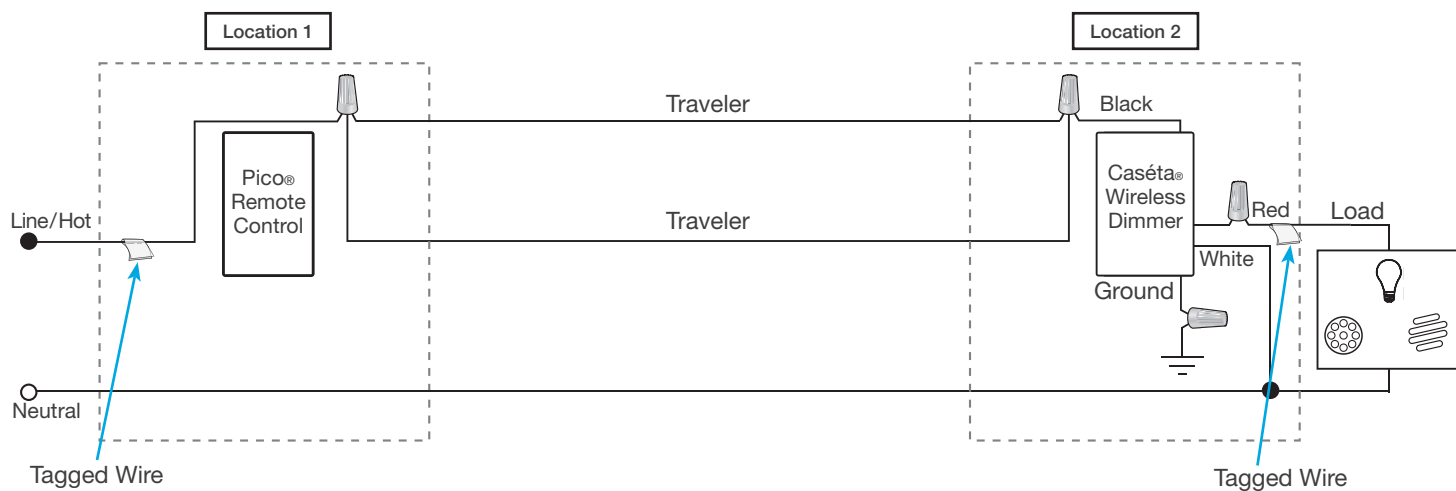
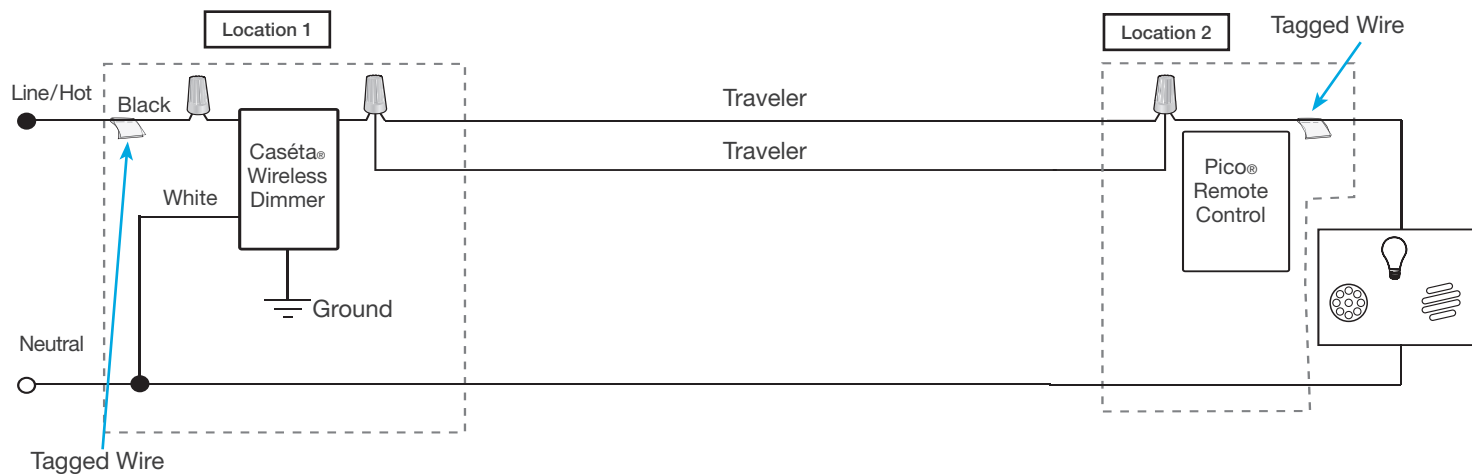
Location 2



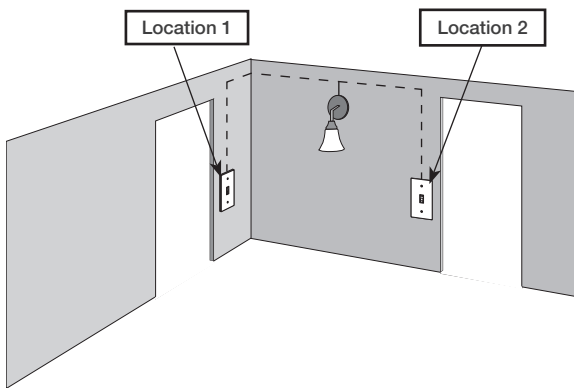
19 Pair additional remote controls

Repeat steps 17 and 18 to pair additional remote controls.

Schematic Diagram



1 Identify existing wiring



Two switches control the lights (3-way installation)

Important note:

- If one switch controls the lights (single-pole installation) See quick-start guide that came with your switch
- If three or more switches control the lights (multi-location installation) See page 41 for details

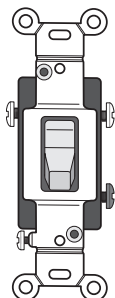
2 What you need for a 3-way installation



In-wall switch
PD-5WS-DV



Claro® Wallplate
CW-1

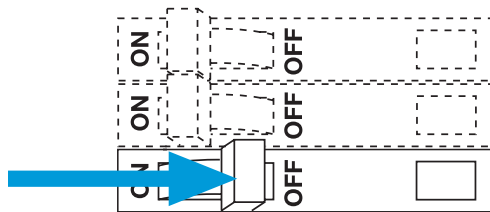


Existing mechanical
toggle switch

3 Choose a location for your Caséta® Wireless switch

Choose which location you want the Caséta® Wireless switch installed in. This will be Location 1.

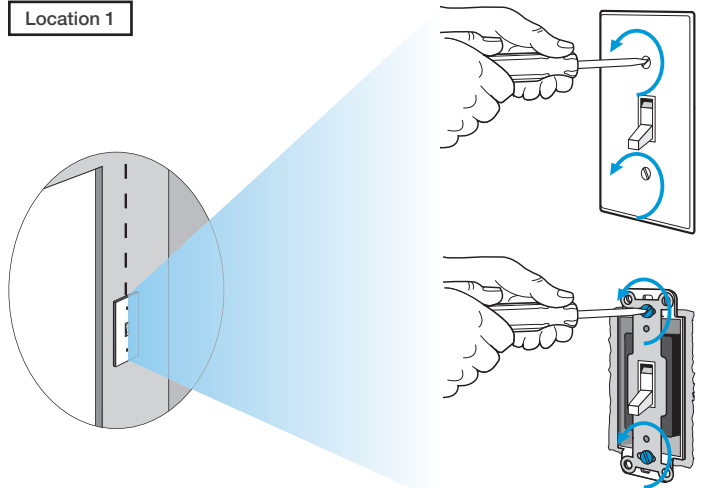
4 Turn power off at circuit breaker



WARNING! Shock Hazard. May result in serious injury or death. Turn off power at circuit breaker before installing the unit.

5 Remove existing switch from wall

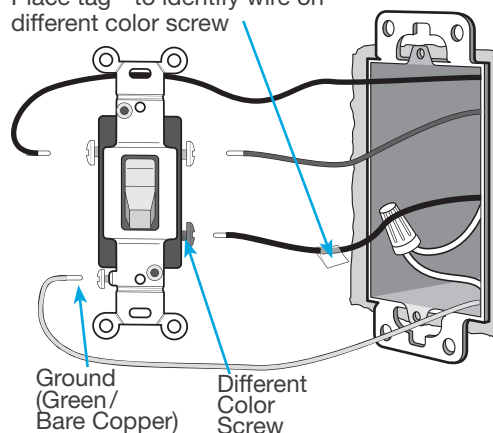
Location 1



6 Tag and disconnect wires from the existing switch

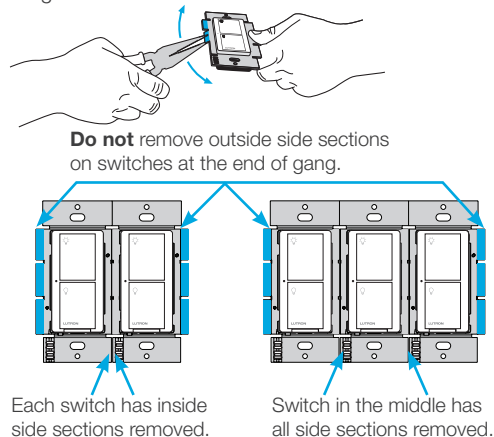
Location 1

Place tag - to identify wire on different color screw



7 Remove side sections (if necessary)

When installing more than one Caséta® Wireless switch in the same wallbox, it is necessary to remove inner side sections prior to wiring. See image and chart below for more information.



Important note:

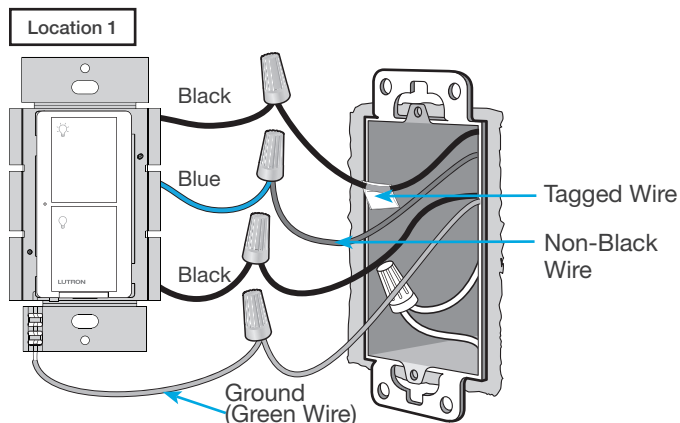
Removing side sections reduces the switch's maximum wattage rating. See the chart below for maximum wattage information.

	A	B	C
PD-5WS-DV (120 V~)			
LED	5 A	4 A	3 A
Halogen/incandescent	600 W	450 W	350 W
Electronic Low-Voltage	600 W	450 W	350 W
Magnetic Low-Voltage ¹	600 VA / 475 W	450 VA / 350 W	350 VA / 275 W
Fluorescent ²	5 A	4 A	3 A
General Purpose Fan	3 A	3 A	3 A
PD-5WS-DV (277 V~)			
LED	5 A	4 A	3 A
Halogen/incandescent	1350 W	1100 W	800 W
Electronic Low-Voltage	1350 W	1100 W	800 W
Magnetic Low-Voltage ¹	1350 VA / 1075 W	1100 VA / 875 W	800 VA / 625 W
Fluorescent ²	5 A	4 A	3 A

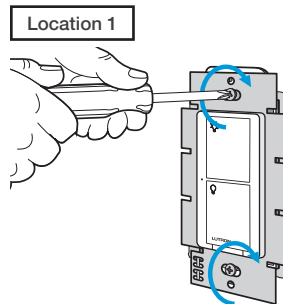
¹ The maximum lamp wattage is determined by the efficiency of the transformer, with 70% – 85% as typical. For actual transformer efficiency, contact either the fixture or transformer manufacturer. The total VA rating of the transformer(s) shall not exceed the VA rating of the in-wall switch.

² The in-wall switch is UL® Listed for use with all magnetic and electronic fluorescent ballasts.

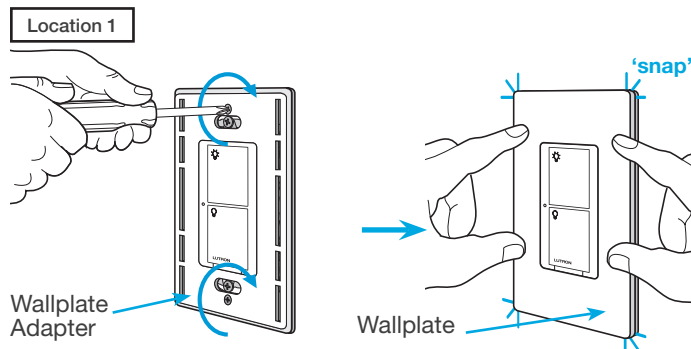
8 Connect the new Caséta® Wireless switch



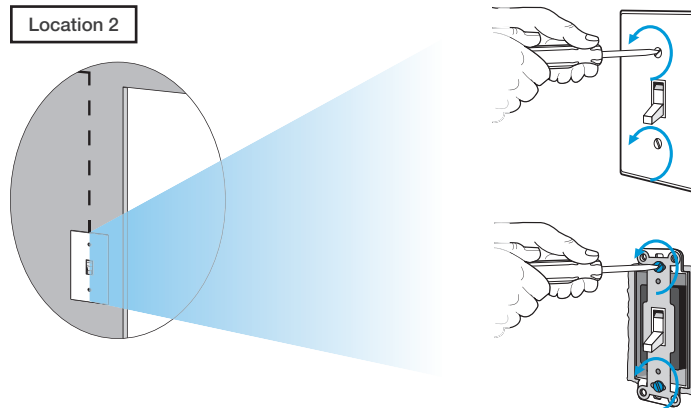
9 Mount the Caséta® Wireless switch



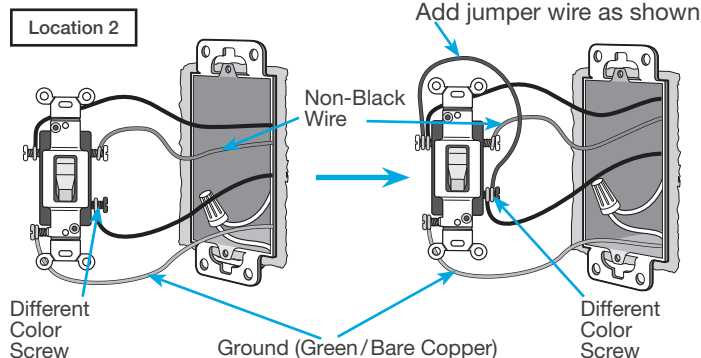
10 Attach the wallplate



11 Remove existing toggle switch from wall at Location 2

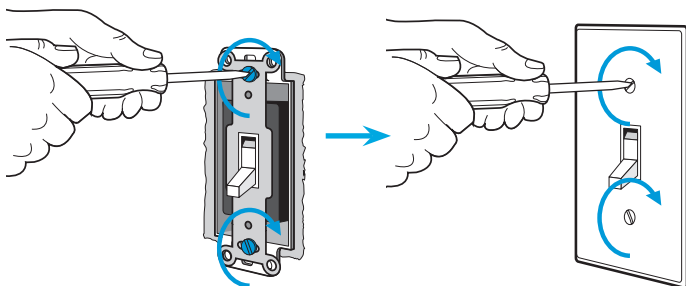


12 Modify wiring for existing toggle switch

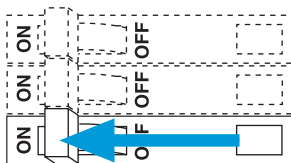


13 Remount existing switch

Location 2



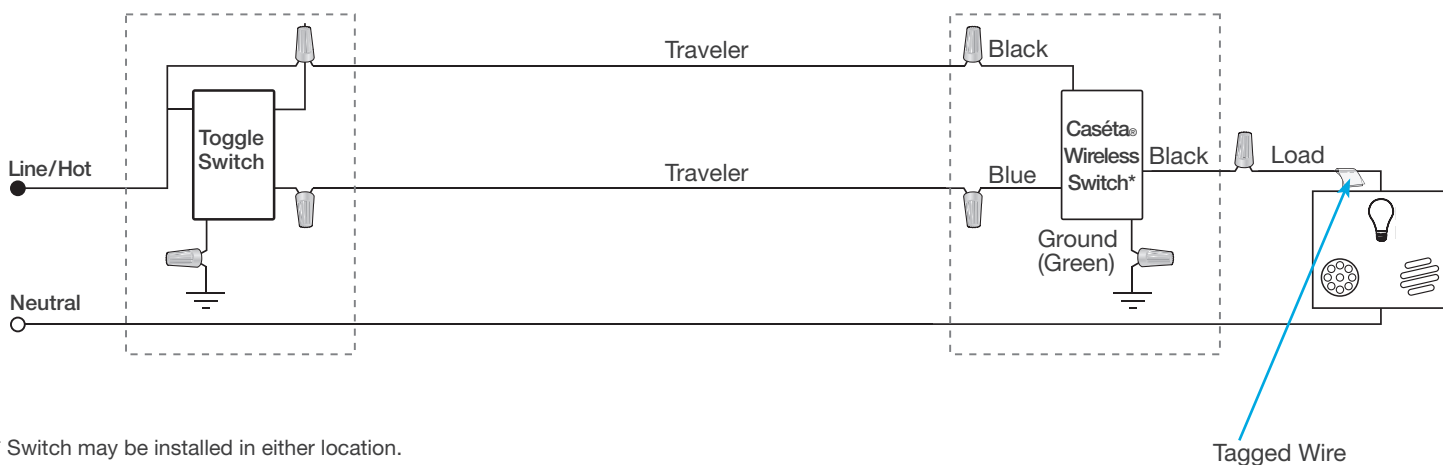
14 Turn power on at circuit breaker



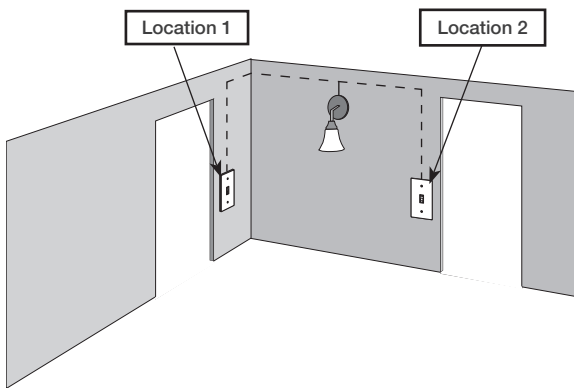
Important note: Pico® remote control (optional)

If you would like to pair a Pico® remote control to the Caséta® Wireless in-wall switch, please follow the procedure described in the quick-start guide that came with your switch.

Schematic Diagram



1 Identify existing wiring

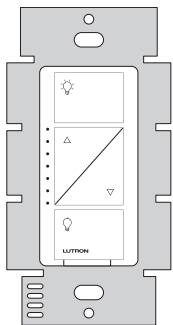


Two switches control the lights (3-way installation)

Important note:

- If one switch controls the lights (single-pole installation) See quick-start guide that came with your switch
- If three or more switches control the lights (multi-location installation) See page 36 for details

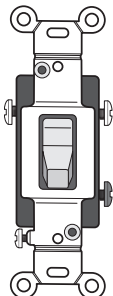
2 What you need for a 3-way installation



In-wall PRO dimmer
PD-10NXD



Claro® Wallplate
CW-1

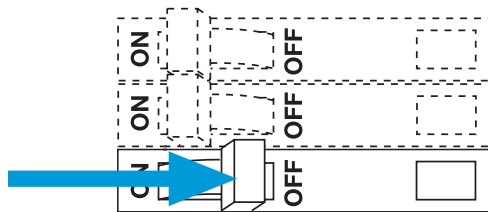


Existing mechanical
toggle switch

3 Choose a location for your Caséta® Wireless dimmer

Choose which location you want the Caséta® Wireless dimmer installed in. This will be Location 1.

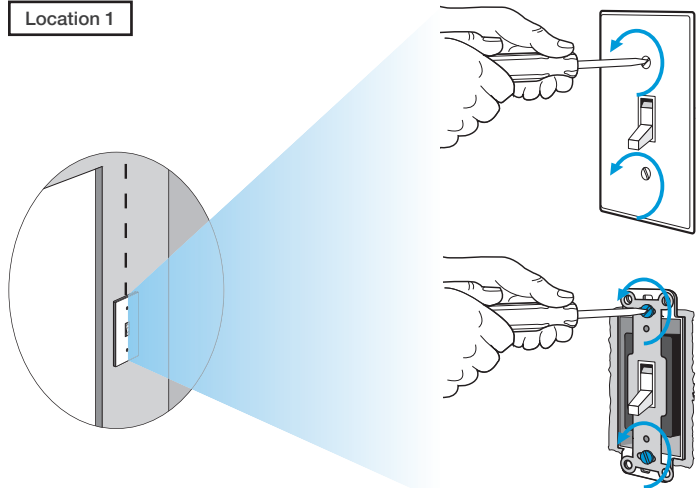
4 Turn power off at circuit breaker



WARNING! Shock Hazard. May result in serious injury or death. Turn off power at circuit breaker before installing the unit.

5 Remove existing switch from wall

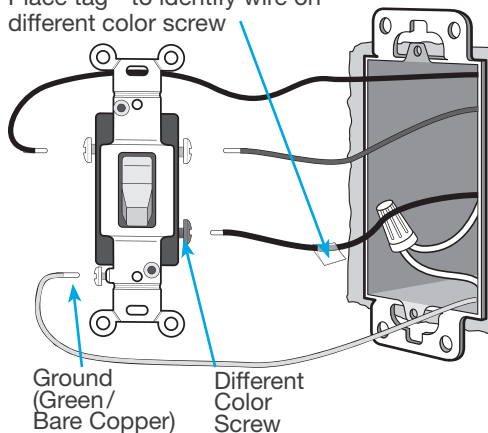
Location 1



6 Tag and disconnect wires from the existing switch

Location 1

Place tag - to identify wire on different color screw

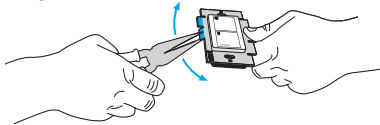


Ground
(Green/
Bare Copper)

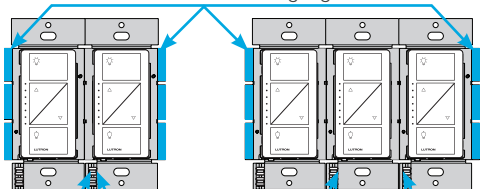
Different
Color
Screw

7 Remove side sections (if necessary)

When installing more than one Caséta® Wireless dimmer in the same wallbox, it is necessary to remove inner side sections prior to wiring. See image and chart below for more information.



Do not remove outside side sections on switches at the end of gang.



Each dimmer has inside side sections removed.

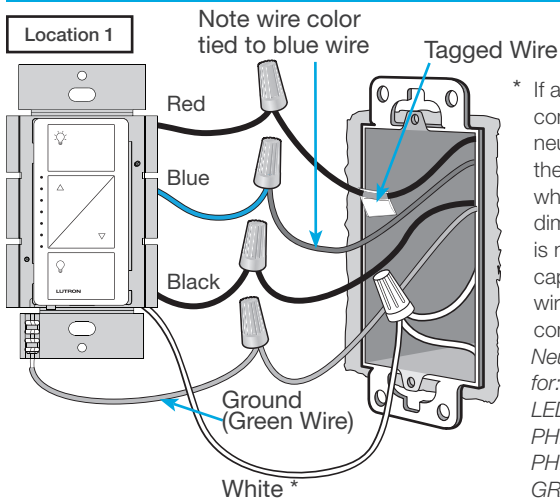
Dimmer in the middle has all side sections removed.

Important note:

Removing side sections reduces the dimmer's maximum wattage rating. See the chart below for maximum wattage information.

Total Dimmable LED Wattage		Incandescent/Halogen Total Wattage		
		A	B	C
0 W	+	1000 W	800 W	600 W
1 W – 25 W	+	900 W	750 W	550 W
26 W – 50 W	+	800 W	700 W	500 W
51 W – 75 W	+	700 W	600 W	450 W
76 W – 100 W	+	600 W	500 W	400 W
101 W – 125 W	+	500 W	400 W	300 W
126 W – 150 W	+	400 W	300 W	200 W
151 W – 175 W	+	300 W	200 W	100 W
176 W – 200 W	+	200 W	100 W	50 W
201 W – 225 W	+	100 W	50 W	0 W
226 W – 250 W	+	0 W	0 W	0 W

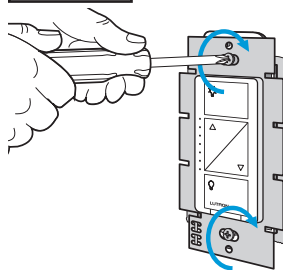
8 Connect the new Caséta® Wireless dimmer



* If available, connect the neutral wire from the neutral wire from the wallbox to the white wire on the dimmer. If neutral is not available, cap the white wire with a wire connector. *Neutral required for: MLV loads, LED drivers, PHPM-PA, PHPM-3F, GRX-TVI.*

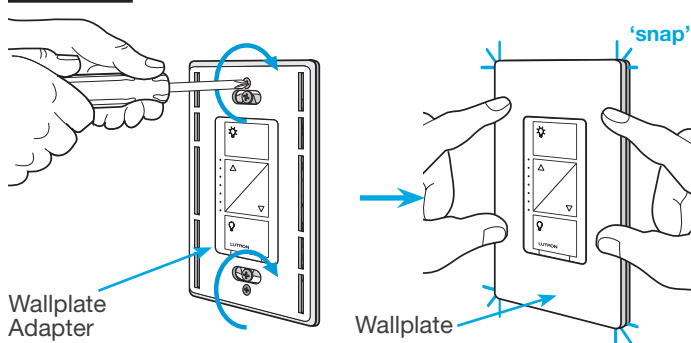
9 Mount the Caséta® Wireless dimmer

Location 1



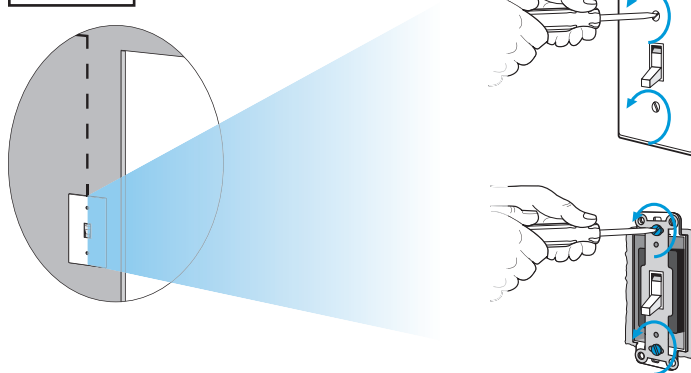
10 Attach the wallplate

Location 1



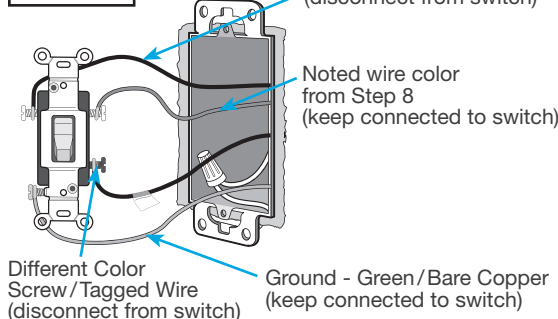
11 Remove existing toggle switch from wall at Location 2

Location 2

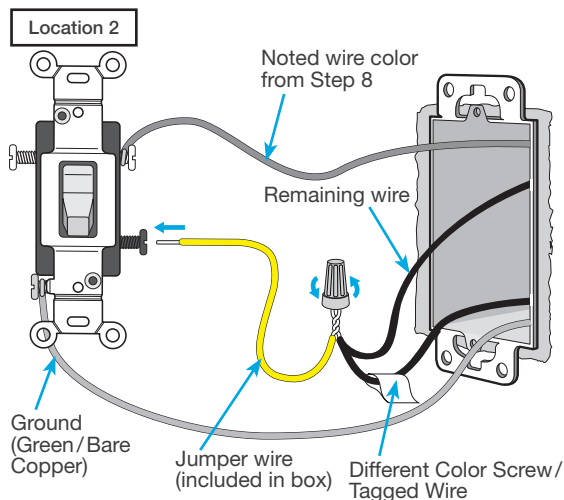


12a Modify wiring for existing toggle switch

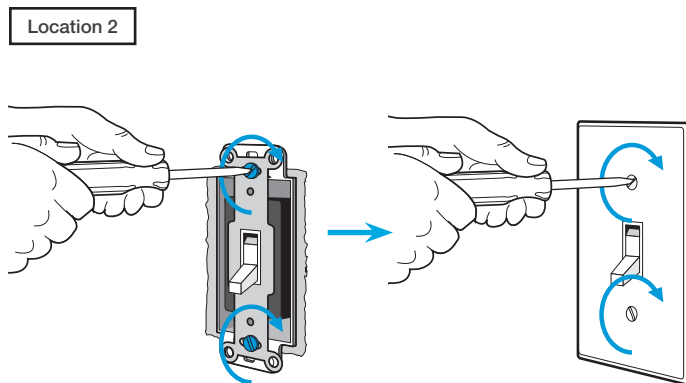
Location 2



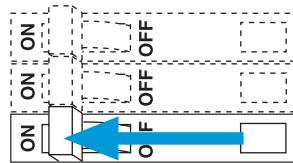
12b Modify wiring for existing toggle switch



13 Remount existing switch



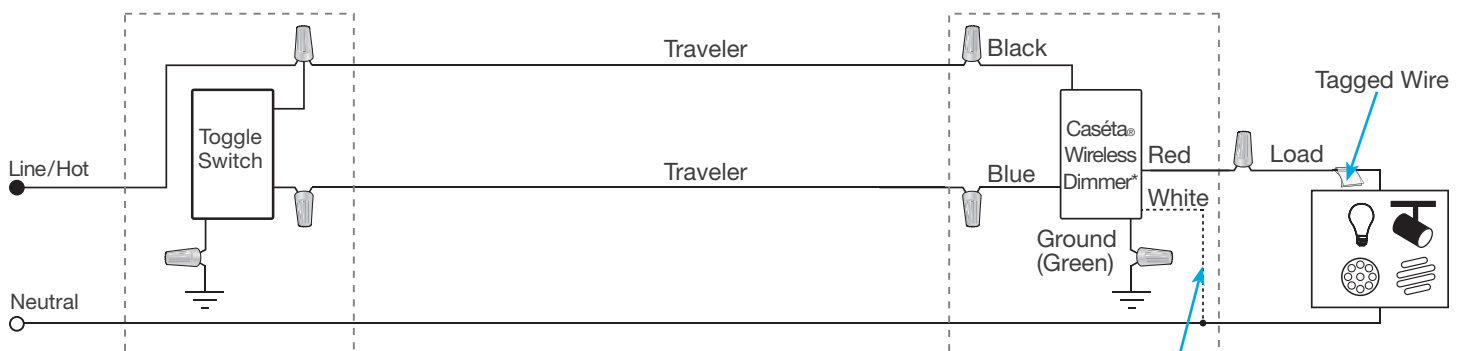
14 Turn power on at circuit breaker



Important note: Pico® remote control (optional)

If you would like to pair a Pico® remote control to the Caséta® Wireless in-wall dimmer, please follow the procedure described in the quick-start guide that came with your dimmer.

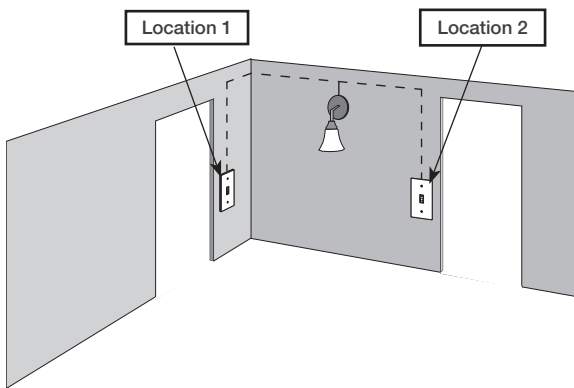
Schematic Diagram



* Dimmer may be installed in either location.

If available, connect the neutral wire from the wallbox to the white wire on the dimmer. If neutral is not available, cap the white wire with a wire connector.
Neutral required for: MLV loads, LED drivers, PHPM-PA, PHPM-3F, GRX-TVI.

1 Identify existing wiring



Two switches control the lights (3-way installation)

Important note:

- If one switch controls the lights (single-pole installation) See quick-start guide that came with your switch
- If three or more switches control the lights (multi-location installation) See page 46 for details

2 What you need for a 3-way installation



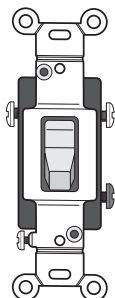
In-wall switch
PD-6ANS

+



Claro® Wallplate
CW-1

+

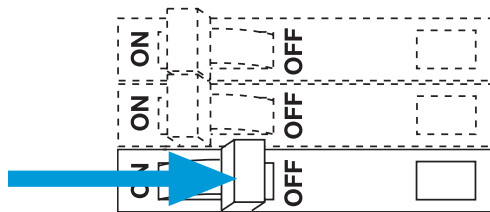


Existing mechanical
toggle switch

3 Choose a location for your Caséta® Wireless switch

Choose which location you want the Caséta® Wireless dimmer installed in. This will be Location 1.

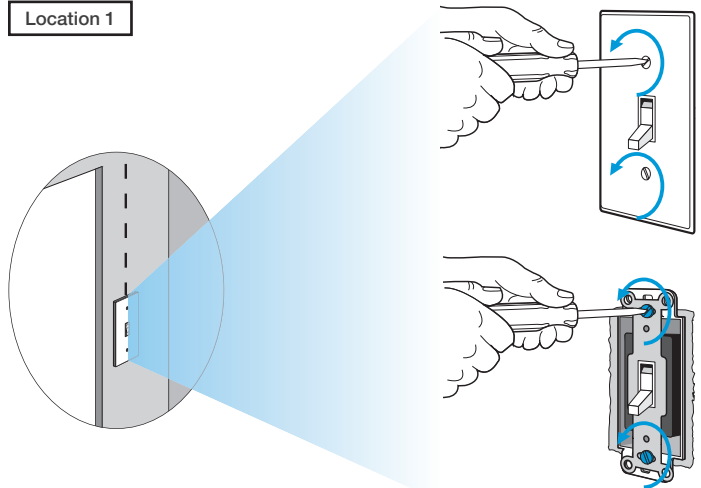
4 Turn power off at circuit breaker



WARNING! Shock Hazard. May result in serious injury or death. Turn off power at circuit breaker before installing the unit.

5 Remove existing switch from wall

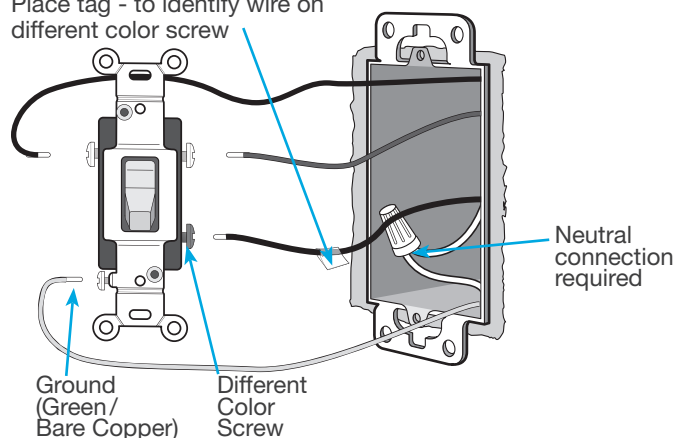
Location 1



6 Tag and disconnect wires from the existing switch

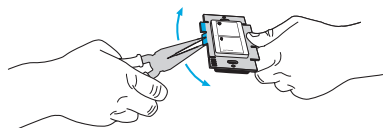
Location 1

Place tag - to identify wire on different color screw

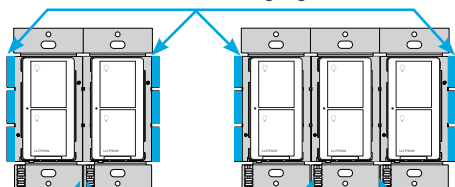


7 Remove side sections (if necessary)

When installing more than one Caséta® Wireless switch in the same wallbox, it is necessary to remove inner side sections prior to wiring. See image and chart below for more information.



Do not remove outside side sections on switches at the end of gang.



Each switch has inside side sections removed.

Switch in the middle has all side sections removed.

Important note:

Removing side sections reduces the switch's maximum wattage rating. See the chart below for maximum wattage information.

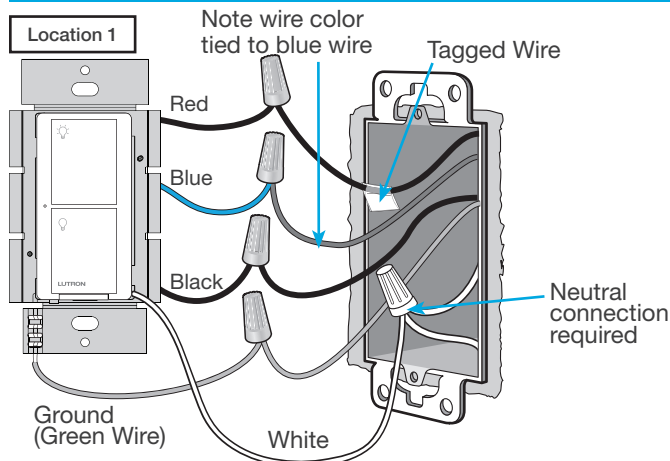
	A	B B	B C B
PD-6ANS (120 V~)¹	A	B	C
LED	6 A	6 A	5 A
Halogen / incandescent	720 W	720 W	600 W
Electronic Low-Voltage	720 VA	720 VA	600 VA
Magnetic Low-Voltage ²	720 VA	720 VA	600 VA
Fluorescent ³	6 A	6 A	5 A
General Purpose Fan	3.6 A	3.6 A	3.6 A

¹ Neutral required.

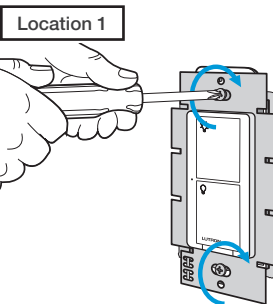
² The maximum lamp wattage is determined by the efficiency of the transformer, with 70% – 85% as typical. For actual transformer efficiency, contact either the fixture or transformer manufacturer. The total VA rating of the transformer(s) shall not exceed the VA rating of the in-wall switch.

³ The in-wall switch is UL® Listed for use with all magnetic and electronic fluorescent ballasts.

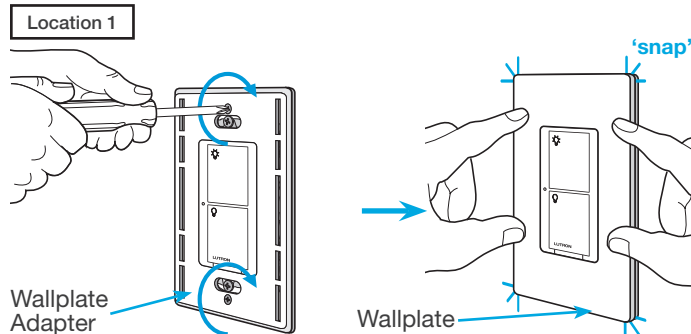
8 Connect the new Caséta® Wireless neutral switch



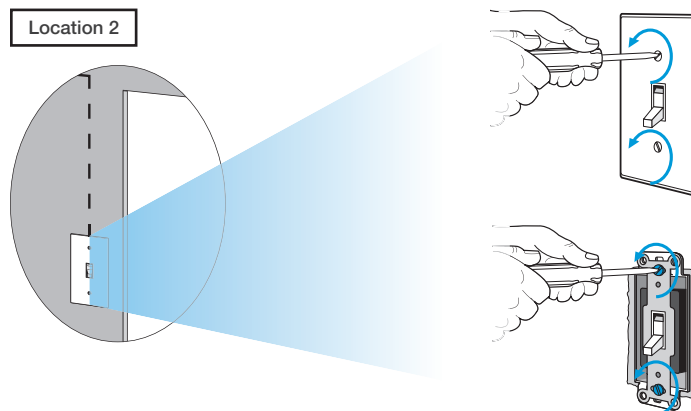
9 Mount the Caséta® Wireless switch



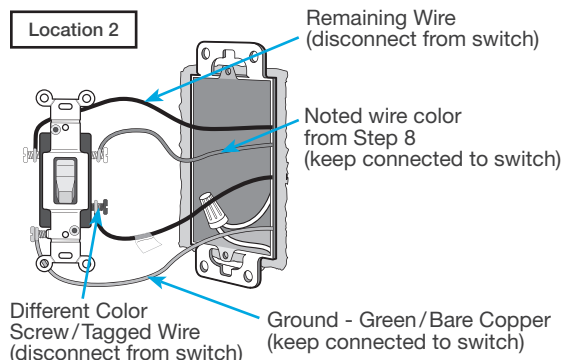
10 Attach the wallplate



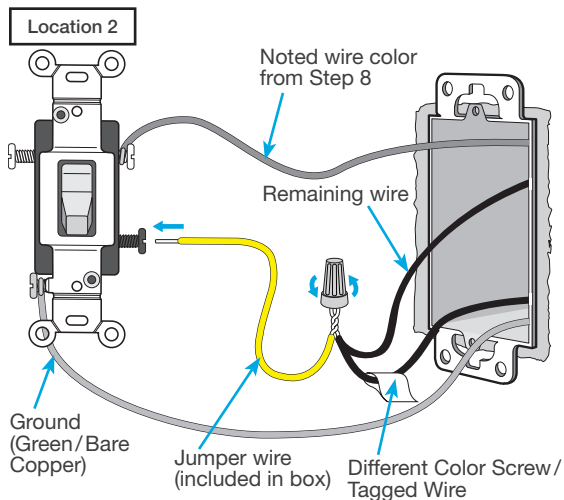
11 Remove existing toggle switch from wall at Location 2



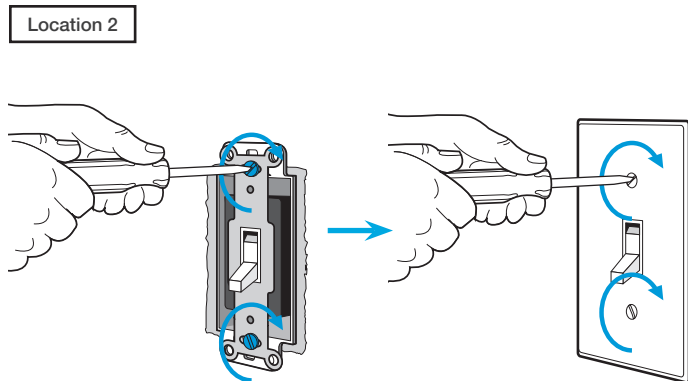
12a Modify wiring for existing toggle switch



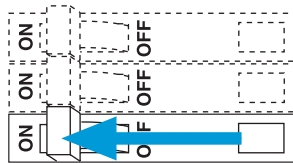
12b Modify wiring for existing toggle switch



13 Remount existing switch



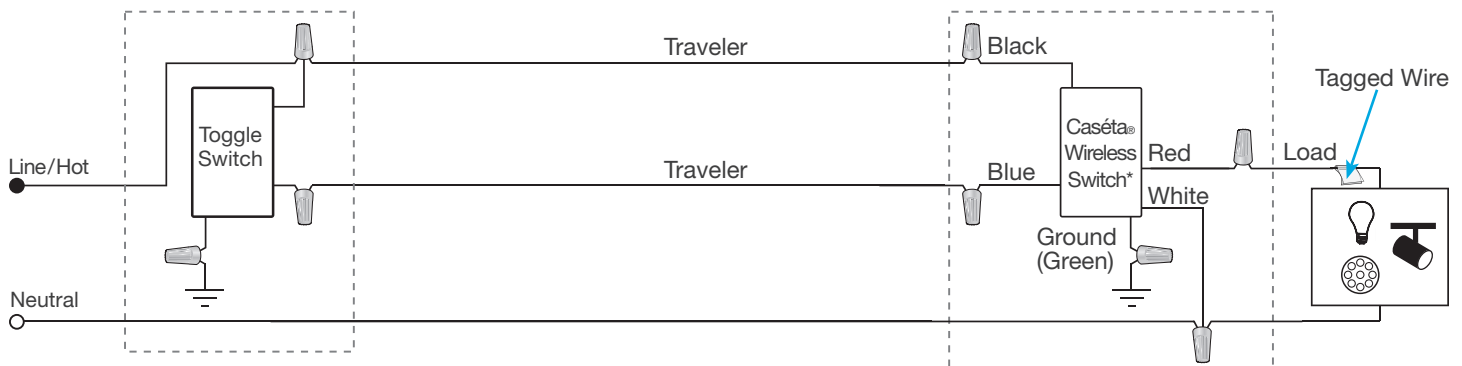
14 Turn power on at circuit breaker



Important note: Pico® remote control (optional)

If you would like to pair a Pico® remote control to the Caséta® Wireless in-wall switch, please follow the procedure described in the quick-start guide that came with your switch.

Schematic Diagram



* Switch may be installed in either location.

Note: The red wire must be connected to the load and the black wire must be connected to Line/Hot. The product will not work if the wires are reversed.